

Ultimate Wood Double Hung Collection

Unit Features	1
Standard Insulating Glass Divided Lite Options	5
Standard Single Glaze Divided Lite Options	6
Optional Interior Square Simulated Divided Lite	7
Double Hung Variations	8

Unit Features

Ultimate Wood Double Hung Collection:

Ultimate Wood Double Hung: UWDH

Ultimate Wood Double Hung Picture: UWDH P

Ultimate Wood Double Hung Transom: UWDH TR

Ultimate Wood Double Hung Bows and Bays: UWDH BB

Ultimate Wood Round Top Double Hung Collection:

Ultimate Wood Double Hung Round Top: UWDH RT

Ultimate Wood Single Hung Round Top: UWSH RT

Ultimate Wood Double Hung Round Top Picture: UWDH RT P

Ultimate Wood Double Hung Round Top Transom: UWDH RT TR

Ultimate Wood Double Hung Magnum Collection:

Ultimate Wood Double Hung Magnum: UWDHM

Ultimate Wood Single Hung Magnum: UWSHM

Ultimate Wood Double Hung Magnum Picture: UWDHM P

Ultimate Wood Double Hung Magnum Transom: UWDHM TR

Ultimate Wood Round Top Double Hung Magnum Collection:

Ultimate Wood Double Hung Magnum Round Top: UWDHMRT

Ultimate Wood Single Hung Magnum Round Top: UWSHMRT

Ultimate Wood Double Hung Magnum Round Top Picture: UWDHM RTP

Ultimate Wood Double Hung Magnum Round Top Transom: UWDHMRTT

Standard Frame:

- Frame thickness: 1 1/16"(17)
- Subsill thickness: 1 3/32"(28)
- Frame base (with pre-drilled installation holes in jambs): 4 9/16"(116) from backside of BMC to interior wood face of frame
- 8 degree bevel on sill and subsill
- Curved frames are laminated and/or edge glued pine
- Radius bead is laminated in non finger-jointed pine
- Optional DP50 sill liner maximum size 2830 or 3026

Standard Sash:

- Operating sash thickness: 1 5/8"(41)
- Transom and picture unit sash thickness 1 5/8"(41) or optional 2" (51)
- All measurements are nominal - sash are removable for easy cleaning, service or finishing
 - WUDH, WUDHP, WUDHRT: Bottom of subsill to top of interior wood sill liner - 3 11/16" (94)
 - Top rail - 2 7/32" (56); stiles - 2 7/16" (62); bottom rail - 3 9/16" (90)
 - WUDHT: Bottom of sill to top of interior wood sill liner - 1 31/32" (50)
 - Top rail - 2 7/32" (56); stiles - 2 7/16" (62); bottom rail - 2 19/32" (66)

Insect Screen

- Aluminum screen: Full screen standard, half screen optional
- Screen Frame
 - Window Frame Height less than or equal to 54 1/2". Standard: Aluminum Screen. Option: Extruded Aluminum Screen Frame
 - Window Frame Height greater than 54 1/2". Standard: Extruded Screen Frame. Option: None.
 - Colors available: Pebble Gray, Bahama Brown, Evergreen, Bronze, Stone White, Ebony, Wineberry, Coconut Cream, Hampton Sage, Cashmere, Sierra White, Cadet Gray, Cascade Blue, Bright Silver (pearlescent), Copper (pearlescent), Clay, Gunmetal, Liberty Bronze (pearlescent), or Suede.
- Optional wood screen
 - Matches wood species/finish selected
- Screens have a cross bar on glass height of 20" (508) and taller
- Full screen: Standard, Optional half screen.
- Screen mesh:
 - Standard: Marvin Bright View™
 - Optional: Charcoal Aluminum Wire, Black Aluminum Wire, Bright Aluminum Wire, Bright Bronze Aluminum Wire

Unit Features

Magnum Frame:

- Double Hung Magnums has a frame thickness head and jamb: 11/16" (17)
- Double Hung Magnums has a sill thickness: 2 13/16"(71)
- Frame base (with pre-drilled installation holes in jambs): 4 9/16"(116) from backside of BMC to interior wood face of frame
- 8 degree bevel on sill and subsill
- Curved frames are laminated and/or edge glued pine
- Radius bead is laminated in non finger-jointed pine

Magnum Sash:

- Transom and picture unit sash thickness 1 5/8"(41) or optional 2" (51)
- All measurements are nominal - sash are removable for easy cleaning, service or finishing
 - WUDHM, WUDHMP, WURTDHM: Bottom of subsill to top of wood interior sill liner - 3 29/32" (99)
 - Top rail - 2 7/32" (56); stiles - 1 15/32" (37); bottom rail - 3 9/16" (90)
 - WUDHMT: Bottom of sill to top of wood interior sill liner- 1 31/32" (50)
 - Top rail - 2 7/32" (56); stiles -1 15/32" (37); bottom rail - 2 19/32" (66)

Hardware: - See Individual Product Chapters

Weather Strip:

- Operating units: Continuous leaf weather strip at head jamb; dual bulb at check rail, weather strip and bottom rail
 - Color: Beige
- Picture units: Continuous weather strip at perimeter; leaf and bulb weather strip at jamb, bulb weather strip at head and sill
 - Color: Beige

Unit Features

Glass and Glazing:

- Glazing seal: Silicone glazed
- Standard glass is Insulating Low E2 Argon or air
- Dual-pane insulating glass thickness: 11/16"
- Triple-pane insulating glass thickness: 7/8"
- Insulating Glass Coatings:
 - Low E1
 - Low E2
 - Low E3
 - Low ERS
 - Low ELR
- Gas Fill: Air or Argon
- Available glass types:
 - Laminated
 - Tempered
 - Obscure
 - Clear
- Tints
 - Bronze
 - Gray
 - Green
 - Reflective Bronze
- Decorative glass options:
 - Frost
 - Reed
 - Narrow Reed
 - Rain
 - Sandblasted
 - Glue Chip
- Glazing will be altitude adjusted for higher elevations with capillary tubes. Argon gas not included
- IZ3 has annealed exterior pane is default with the option to temper
- Egress may be affected when selecting specialty glass, please contact your Marvin representative
- For additional specialty glazing options, please contact your Marvin representatives.

Unit Features

Wood Combination Storm Sash and Screen:

- Frame: Treated bare wood or white primed (pine only)
- Storm panel: Select quality glass is an extruded aluminum frame
- Frame color: Stone White or Bronze
- Insect screen: Marvin BrightView™
 - Optional screen material: Charcoal Aluminum Wire, Black Aluminum Wire, Bright Aluminum Wire, Bright Bronze Aluminum Wire
- Weather strip: Pile weather strip between operating panels and at stiles of main frame
- Hardware: Spring loaded latches to secure storm panel.

Combination Storm and Sash Screen:

- Frame: Treated bare Pine wood or white primed (pine only)
- Storm panel: Select quality glass in an extruded aluminum frame
- Colors: Stone White or Bronze
- Standard screen: Marvin BrightView™
 - Optional screen mesh: Charcoal Aluminum Wire, Black Aluminum Wire, Bright Aluminum Wire, Bright Bronze Aluminum Wire
- Weather strip: Pile weather strip between operating panels at the stiles of the main frame
- Hardware: Spring loaded latches to secure the storm panel.

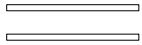
Wood Storm Sash:

- Frame: Treated bare pine wood or white primed (pine only)
- Glazing: Select quality glass

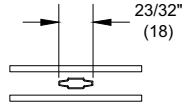
Cedar Dress Option:

- Available on pine frames
- Bare cedar
- Components:
 - Sill
 - Subsill
 - Blind stops and jamb covers
 - Mull covers
 - Brick Mould and Flat Casing
- See individual chapter for section detail

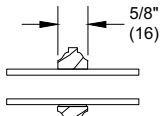
Standard Insulating Glass Divided Lite Options



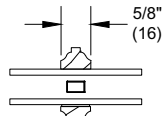
Insulating Glass



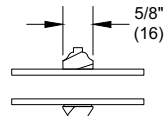
Aluminum 23/32"
Contour GBG



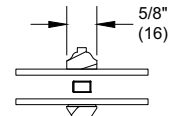
5/8" SDL



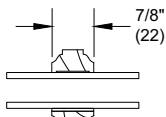
5/8" SDL
W/Spacer



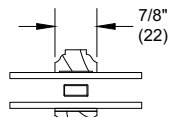
5/8" Putty
SDL



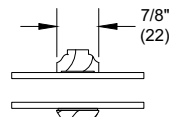
5/8" Putty SDL
W/Spacer



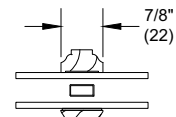
7/8" SDL



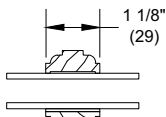
7/8" SDL
W/Spacer Bar



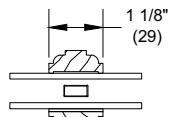
7/8" Putty SDL



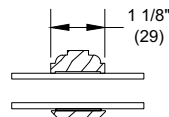
7/8" Putty SDL
W/Spacer Bar



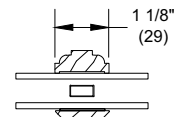
1 1/8" SDL



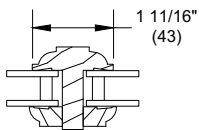
1 1/8" SDL
W/Spacer Bar



1 1/8" Putty SDL



1 1/8" Putty SDL
W/Spacer Bar



1 11/16" IG ADL

NOTE: Due to the inherent qualities of tempered glass, daylight gaps may be seen when using simulated divided lite bars. Daylight gaps could be visible between the internal spacer bar and surface applied bars when viewing from an acute angle to the glass on the following applications:

- Tempered glass over 72" high while using 5/8" SDL bars
- Tempered glass over 91" high while using 7/8" SDL bars.

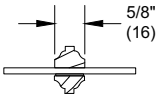
Standard Single Glaze Divided Lite Options



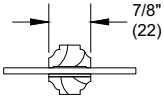
Single Glaze



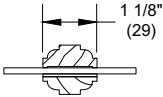
Single Glaze
W/ Energy Panel



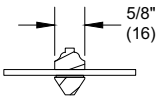
5/8" SDL



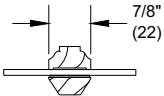
7/8" SDL



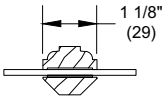
1 1/8" SDL



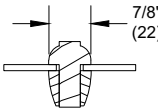
5/8" Putty SDL



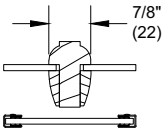
7/8" Putty SDL



1 1/8" Putty SDL

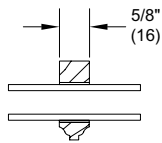


7/8" SG-ADL

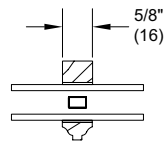


7/8" SG-ADL
W/ Energy Panel

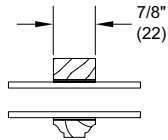
Optional Interior Square Simulated Divided Lite



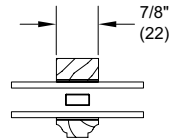
5/8" SDL



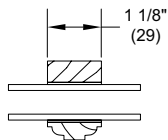
5/8" SDL
W/Spacer



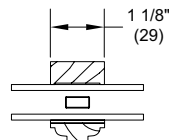
7/8" SDL



7/8" SDL
W/Spacer Bar



1 1/8" SDL

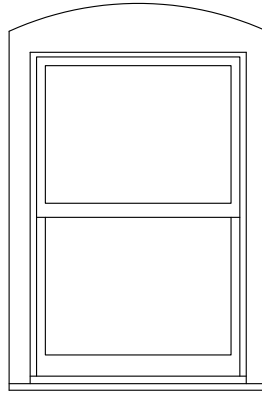


1 1/8" SDL
W/Spacer Bar

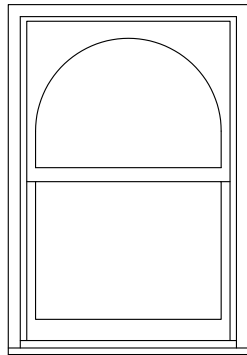
NOTE: Due to the inherent qualities of tempered glass, daylight gaps may be seen when using simulated divided lite bars. Daylight gaps could be visible between the internal spacer bar and surface applied bars when viewing from an acute angle to the glass on the following applications:

- Tempered glass over 72" high while using 5/8" SDL bars
- Tempered glass over 91" high while using 7/8" SDL bars.

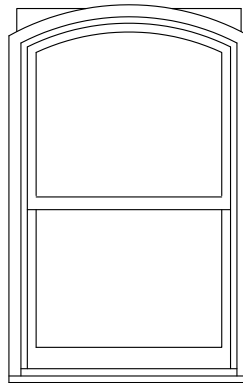
Double Hung Variations



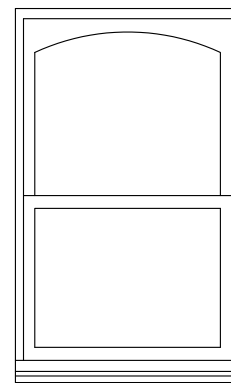
Variation 3



Variation 5



Variation 6
Exterior View



Variation 6
Interior View

Variation 3: Radius Top Casing - Ultimate Wood Double Hung or Single Hung, Wood Magnum Double Hung or Single Hung
Variation 5: Top Sash Radius DLO - Ultimate Wood Double Hung or Single Hung, Ultimate Wood Double Hung or Single Hung Magnum

Variation 6: Square Sash, Casing, Blind stop, and DLO are curved - Ultimate Wood Double Hung or Single Hung, Ultimate Wood Double Hung or Single Hung Magnum