

# Ultimate Casement, Ultimate Casement Round Top WOCD

## Field Applied Instructions

Failure to follow these instructions may result in the window opening control devices (WOCDs) being ineffective in controlling the window opening.

A copy of the safety information shall be provided to the owner of the building in which the window opening control device (WOCD) is installed and to the occupant in the dwelling where the opening control device is installed (or is to be installed).

*NOTE: This instruction is for Ultimate Casement (UCA) and Ultimate Casement Round Top (UCART). When installed and used as directed, the Window Opening Control Device meets the requirements of ASTM F2090-17.*

Building and fire codes shall be consulted before installing WOCDs. Contact local building code department or fire department for specific applicable codes and install in accordance.

The casement WOCD is not applicable for use in coastal applications.

Follow manufacturer's assembly and installation instructions carefully. Failure to do so may result in accidental window falls.



## WARNING!

### Possible Fall Hazard

- Young children may fall out of the window if the window opening control device (WOCD) is not installed correctly.
- Install the device so that a rigid 4.0-in. (102mm) diameter sphere does not pass through any space at the lowest opening portion in the window opening after the WOCD is in place.
- Young children may fall out of the window if all installation instructions are not followed.
- Use recommended materials and techniques.
- Make sure that the WOCD is securely installed in accordance with manufacturer's instructions.
- Make sure that the window frame is in good condition.

*NOTE: Once installation of unit is complete, check WOCD for proper operation and then close securely. To re-engage the WOCD, close the sash completely and lock the window and check for operability.*

Minimum and Maximum sizes				
Unit	Frame Size Width		Frame Size Height	
	Min	Max	Min	Max
UCA	26.000 (660)	44.000 (1118)	31.125 (791)	102.00 (2590)
UCART	28.000 (711)	44.000 (1118)	26.125 (664)	97.063 (2465)

### Required Tools:

- Flat pry bar
- WOCD frame jig
- Phillips screwdriver (No. 2)
- 7/64" drill bit and drill (long preferred)
- WOCD sash jig
- If solid wood side covers are used, the locking jamb cover will need to be replaced with factory cut parts for use with WOCD

Part No.	Description	Qty	Notes
19916114	Field Installation Instructions	1	
19916102	Hang Tag	1	
19972239	Safety Information	2	One for owner, one for occupant
11718011	WOCD Sticker	1	
10502999	Casement WOCD Tether Assembly	1	Available in beige only
	Casement WOCD Locking Assembly	1	
11881120	#8-15 x 1.500" Flathead Screw	2	
11806251	#8-18 x 0.750" Torx T20 Screw, AB	2	

**Table 1:** Field-applied WOCD kit details

## Field-Applied Install Process

### IMPORTANT

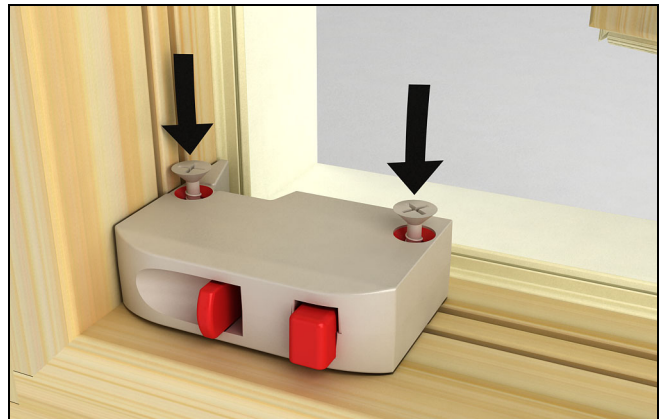
Inspect all fabrication jigs before and after each use. Ensure bushings are not loose and do not show heavy wear. Inspect all jamb stops, jamb covers, and hardware covers for damage. Contact Customer Support if a replacement is needed.

1. Remove the sill, head jamb, and locking jamb covers. Place the frame drilling jig in the lower frame corner on the locking side, drill two 3/32" (2) holes approximately 3/8" (10) deep into the sill. Jig must be flush to the jamb. [See Figure 1.](#)



**Figure 1**

2. Install the window opening control device locking assembly onto the sill using two #8 x 1 1/2" screws. Do not over tighten. [See Figure 2.](#)



**Figure 2**

3. Place jig as shown in [Figure 3](#). Pre-drill two 3/32" (2) holes approximately 3/8" (10) deep.



**Figure 3**



## Tip

On tether assembly, ensure the spring is fully seated. The base of tether covers the spring. Fasten tether base to stile first.

4. Install the window opening control device tether by using two #8 X 1" pan head screws. Do not over tighten. See Figure 4.



Figure 4

## Modify the sill and vinyl locking jamb covers

1. Fabricate the wood sill cover to fit over the window opening control device locking assembly by using the *Sill cover router jig*. The inside corner will need to be filed to a 90° angle. See Figure 5.

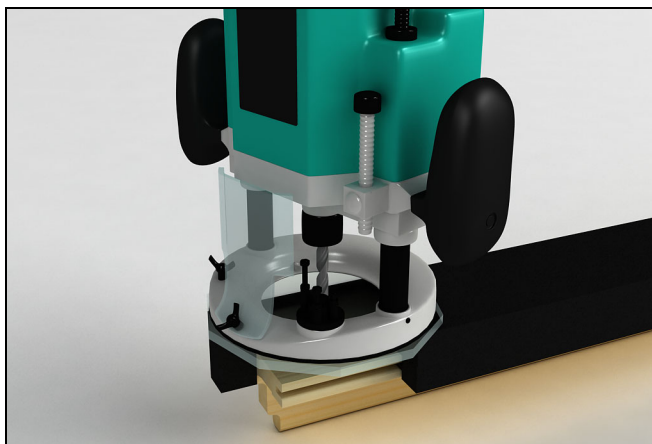


Figure 5

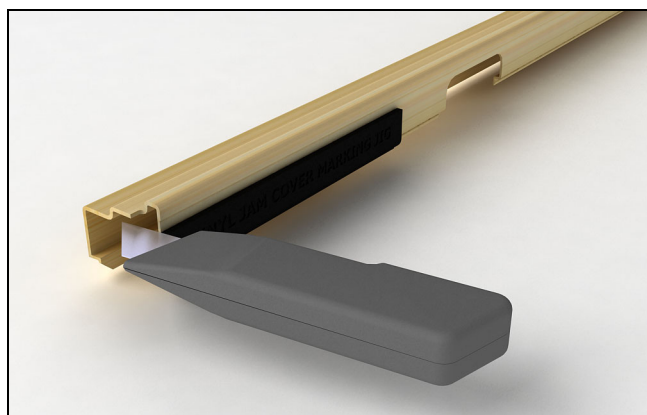


Figure 6

2. Fabricate either the vinyl or wood locking jamb cover. Start by removing 3/4" (19) off of the bottom of the locking side jamb cover. See Figure 6. **For vinyl covers:** using the vinyl cover marking jig to mark the locking jamb cover at the bottom and remove 1 1/8" x 6 5/16" square for hardware clearance. A utility knife or tin snips works will for this application. See Figure 6.

---

## ***Finishing the Installation***

1. Replaces the modified covers. Test the operation of the window opening control device. [See Figure 7.](#)



**Figure 7**

2. Place a window opening control device label on the operator sash track.