

BOWS AND BAYS

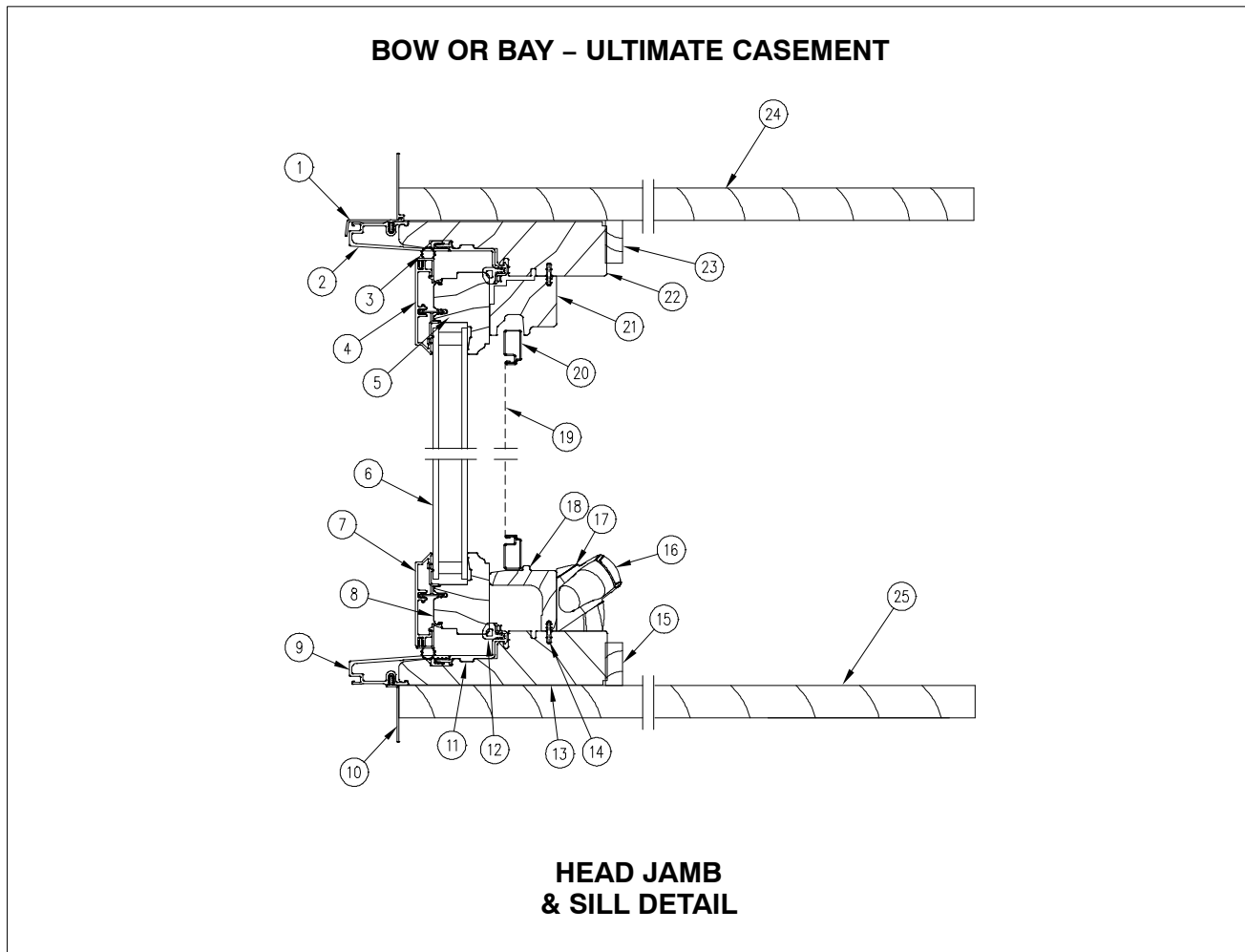
Table of Contents

	PAGE
History	3
Ultimate Casement Bow and Bay – Part Identification	
Clad Ultimate Casement Bow or Bay	12
Clad Ultimate Casement 45° Bay	13
Clad Ultimate Casement 90° Bay	14
Clad Ultimate Casement Bow	15
Clad Ultimate Push Out Casement Bow or Bay	16
Clad Ultimate Push Out Casement 45° Bay	17
Clad Ultimate Push Out Casement 90° Bay	18
Clad Ultimate Push Out Casement Bow	19
Ultimate Wood Casement Bow and Bay – Part Identification	
Wood Ultimate Casement Bow or Bay	20
Wood Ultimate Casement 45° Bay	21
Wood Ultimate Casement 90° Bay	22
Wood Ultimate Casement Bow	23
Wood Ultimate Push Out Casement Bow or Bay	24
Wood Ultimate Push Out Casement 45° Bay	25
Wood Ultimate Push Out Casement 90° Bay	26
Wood Ultimate Push Out Casement Bow	27
Ultimate Double Hung Bay – Part Identification (Head Jamb and Sill)	
Wood Ultimate Double Hung Bay	28
Ultimate Double Hung Bay – Part Identification – Jamb Details	
Wood Ultimate Double Hung Bay	29
Replacement Parts	33

ATTENTION:

- Specification and technical data are subject to change without notice.
- Numbers listed in parentheses () are metric equivalents in millimeters rounded to the nearest whole number.

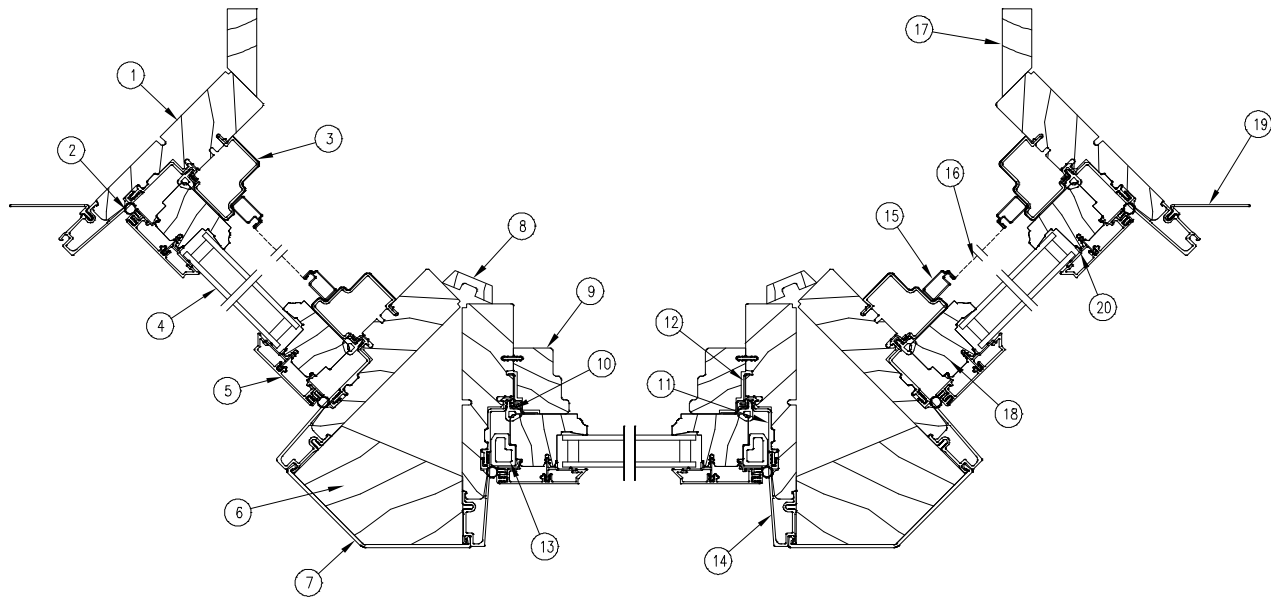
PRODUCED	UNIT TYPE	FEATURES OR CHANGES	STATUS
1962	Casement Bows	Introduced 4, 5 and 6 wide bow units with head and seat board.	1979
1971	Wood Double Hung Bays	Introduced 30 and 45 degree bay units with head and seat board.	Present
1974	Wood Casemaster Bows and Bay	Introduced 45 degree bay and 5 wide bow units with head and seat board.	Present
1976	Wood Casemaster Bow	Added 4 and 6 wide bow units.	Present
1978	Clad Casemaster Bows and Bay	Introduced 45 degree bay and 4, 5 and 6 wide bow units with head and seat board.	Present
1979	Clad Double Hung Bay	Introduced 45 degree bay unit with head and seat board.	Present
1981	Wood Casemaster and Double Hung Bays	Introduced 60 degree bay units with head and seat board.	Present
1982	Wood Casemaster Bays	Introduced 30 and 90 degree bay units with head and seat board. The 90 degree bay features 1 7/8" top and side flat casing.	Present
1983	Clad Double Hung and Clad Casemaster Bays	Introduced 30 degree bay units with head and seat board.	Present
1983	Sun Bays	Unit featured a 90 degree bay configuration with polygon shaped operating flankers, 1" direct glazed center section and a 1" direct glazed sloped top. Unit was complete with seat board, lever operators, cam locks, butt hinges, 3" top flat casing and 1 1/2" side flat casing.	1994
1987	Clad Casemaster Bay	Introduced 90° bay units with head and seat board.	Present
1991	Wood 90 Degree Bent Glass Triangle Bay	Unit features 1" direct glazed bent glass, clear brick mould casing and clear sill. Head and seat board included.	1999
1992	Sun Bays	Weather strip upgraded.	1994
2003	Wood and Clad Casemaster Bow & Bay	3/31/03 Satin Taupe (TP) hardware replaces bronze as standard. New interior stops, Satin Taupe aluminum screens, optional wood surround screens are available. New screen location and fastening system. New one-piece clad sash extrusion.	Present
	Wood and Clad Ultimate Double Hung	3/31/03 Satin Taupe (TP) hardware replaces bronze as standard.	Present
	Wood and Clad Casemaster Bow & Bay	4/14/03 Newly designed Satin Taupe (TP) folding handle is standard.	Present
2004	Wood and Clad Bow & Bay	1/2004 Added Oil Rubbed Bronze and Satin Chrome to available hardware finishes	Present
2005	Wood and Clad Bow & Bay	2/2005 Added cable support system	Present
2008	Clad Bow & Bay	7/28/2008 Added Clad Ultimate Casement. Mixed grain Douglas fir is now a standard option.	Present
2009	Wood & Clad Bow & Bay	1/26/2009 Added Wood Ultimate Casement, and wood and clad Ultimate Push out.	Present
2009	All	3/23/2009 Added LoE ³ -366™ as a standard option for all products. Added Cedro Macho as a standard option for all clad products.	Present
2011	All	04/25/2011 Added LoE ³ -180™ as a standard option for all products. White painted interior finish option introduced for all products	Present
2012	All	12/17/2012 Clear interior finish option introduced for all products.	Present
2013	All	04/29/2013 Introduced interior stain options. Stain colors are Wheat, Honey, Leather, Hazelnut, Cabernet and Espresso.	Present
2016	All	10/31/2016 Obsolescence of the wood species Cedro Macho for all products.	Present
2017	All	10/30/2017 Energy panel colors discontinued with exception of bronze and stone white	Present



NOTE: Not to scale; specifications subject to change without notice.

- | | | |
|-----------------------------------|--------------------------|-----------------------|
| 1. Head Jamb Nailing Fin/Drip Cap | 10. Sill Nailing Fin | 19. Screen Mesh |
| 2. Head Jamb Cladding | 11. Frame Thermal Break | 20. Screen Frame |
| 3. Sash Weather Strip | 12. Frame Weather Strip | 21. Head Jamb Stop |
| 4. Top Rail Cladding | 13. Sill | 22. Head Jamb |
| 5. Top Rail | 14. Connecting Barb | 23. Top Interior Trim |
| 6. Insulated Glass | 15. Bottom Interior Trim | 24. Head Board |
| 7. Bottom Rail Cladding | 16. Folding Crank Handle | 25. Seat Board |
| 8. Bottom Rail | 17. Folding Crank Cover | |
| 9. Sill Cladding | 18. Hardware Cover | |

45° BAY – ULTIMATE CASEMENT

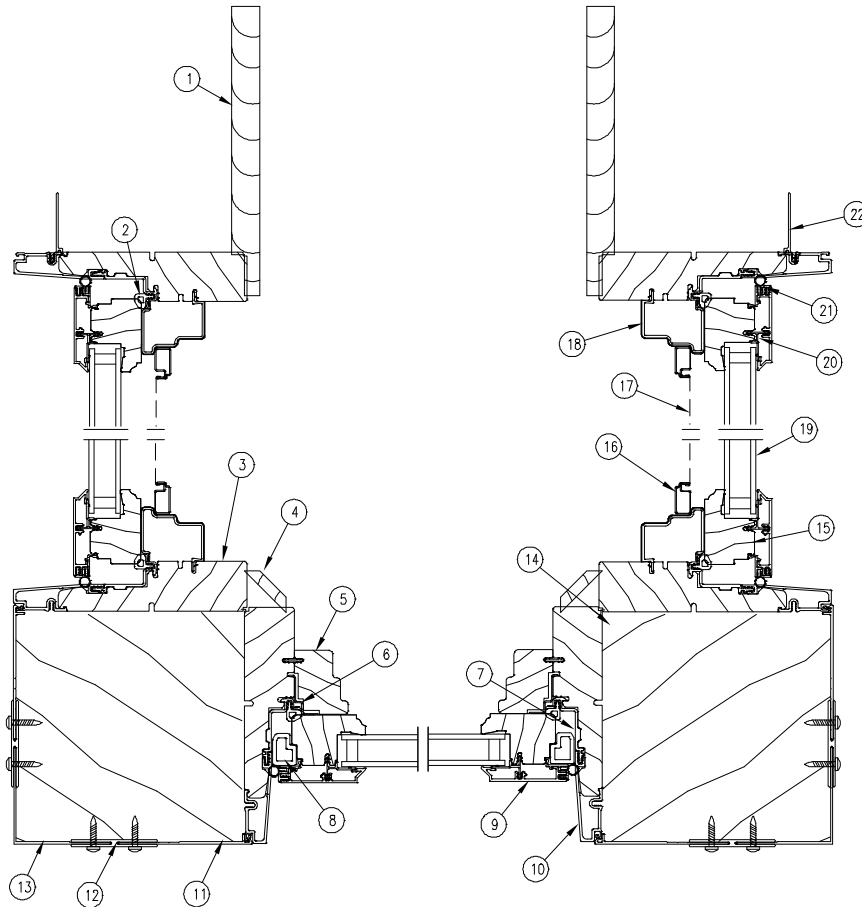


JAMB DETAIL

NOTE: Not to scale; specifications subject to change without notice.

- | | | |
|-----------------------|-----------------------------|-----------------------|
| 1. Jamb | 8. Interior Mull Trim | 15. Screen Frame |
| 2. Sash Weather Strip | 9. Stationary Side Stop | 16. Screen Mesh |
| 3. Side Stop | 10. Frame Weather Strip | 17. Return Jamb |
| 4. Insulated Glass | 11. Thermal Break | 18. Stile |
| 5. Stile Cladding | 12. Stationary Jamb Bracket | 19. Jamb Nailing Fin |
| 6. Mull Block | 13. Stationary Sash Block | 20. Sash Glazing Bead |
| 7. Mull Cap | 14. Jamb Cladding | |

90° BAY – ULTIMATE CASEMENT

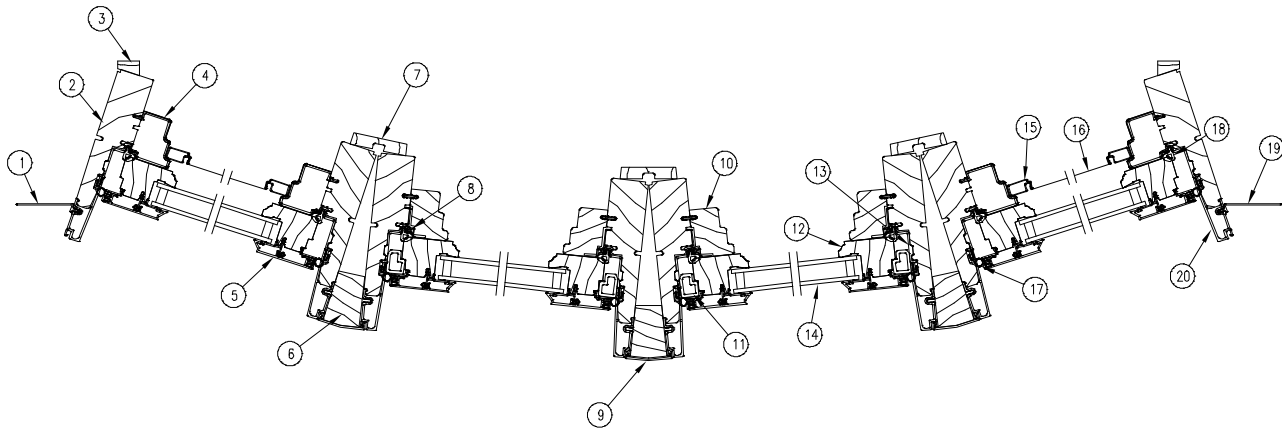


**HEAD JAMB
& SILL DETAIL**

NOTE: Not to scale; specifications subject to change without notice.

- | | | |
|----------------------------|--------------------------------|------------------------|
| 1. Return Jamb | 10. Jamb Cladding | 19. Insulated Glass |
| 2. Frame Weather Strip | 11. Clad Frame Expander | 20. Sash Glazing Bead |
| 3. Jamb | 12. Clad Mull Expander | 21. Sash Weather Strip |
| 4. Interior Mull Trim | 13. 90 Degree Bay Corner Cover | 22. Jamb Nailing Fin |
| 5. Stationary Side Stop | 14. Mull Block | |
| 6. Stationary Sash Bracket | 15. Stile | |
| 7. Frame Thermal Break | 16. Screen Frame | |
| 8. Stationary Sash Block | 17. Screen Mesh | |
| 9. Stile Cladding | 18. Side Stop | |

BOW – ULTIMATE CASEMENT

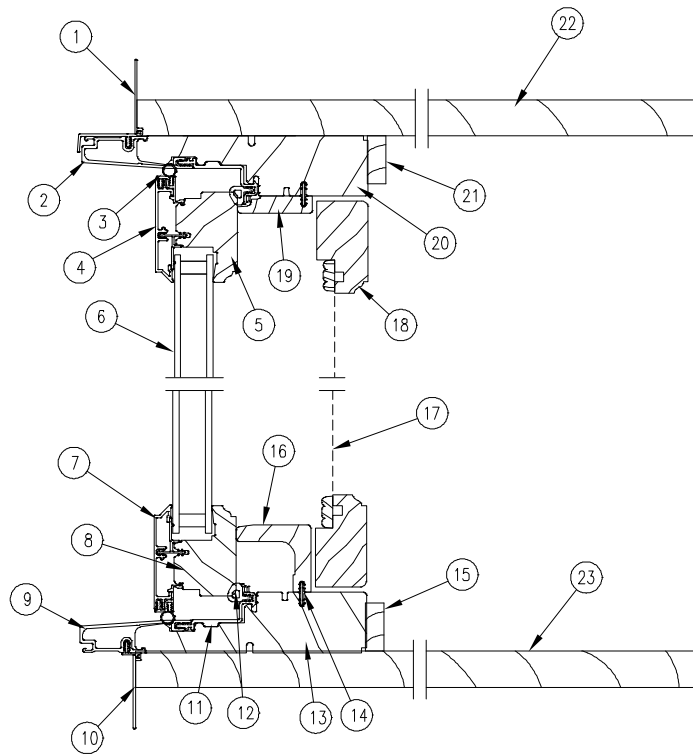


JAMB DETAIL

NOTE: Not to scale; specifications subject to change without notice.

- | | | |
|----------------------------|---------------------------|-------------------------|
| 1. Jamb Nailing Fin | 9. Clad Mull Cap | 17. Sash Weather Strip |
| 2. Jamb | 10. Side Stop | 18. Frame Weather Strip |
| 3. Return Jamb | 11. Stationary Sash Block | 19. Jamb Nailing Fin |
| 4. Side Stop | 12. Stile | 20. Jamb Cladding |
| 5. Stile Cladding | 13. Frame Thermal Break | |
| 6. Mull Block | 14. Insulated Glass | |
| 7. Interior Mull Trim | 15. Screen Frame | |
| 8. Stationary Sash Bracket | 16. Screen Mesh | |

BOW OR BAY - ULTIMATE CASEMENT PUSH OUT

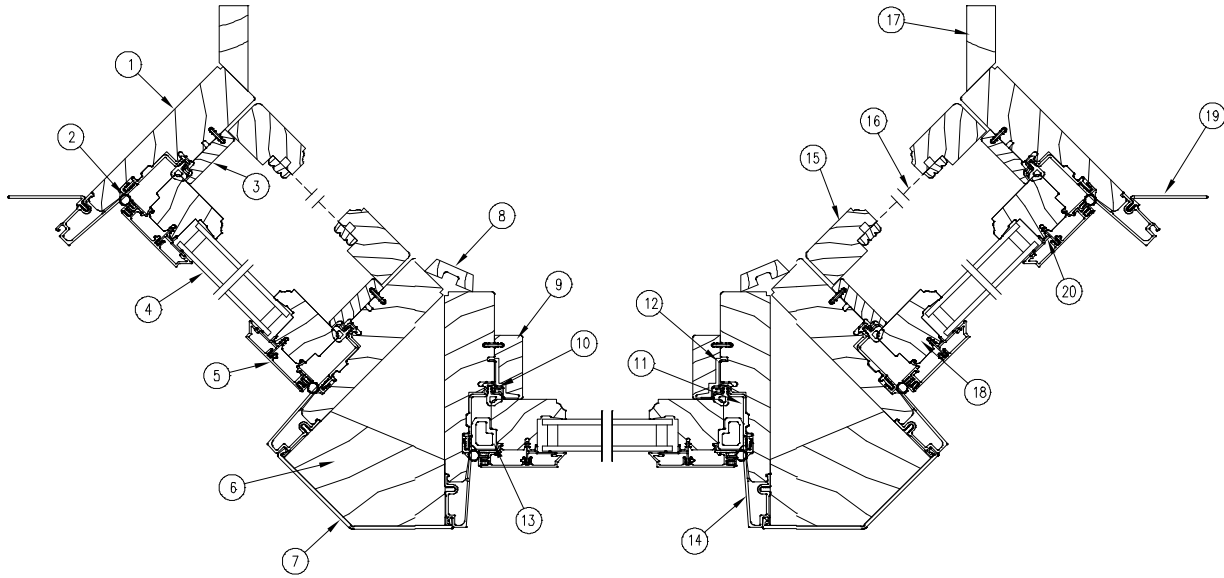


**HEAD JAMB
& SILL DETAIL**

NOTE: Not to scale; specifications subject to change without notice.

- | | | |
|-----------------------------------|--------------------------|-----------------------|
| 1. Head Jamb Nailing Fin/Drip Cap | 10. Sill Nailing Fin | 19. Head Jamb Stop |
| 2. Head Jamb Cladding | 11. Frame Thermal Break | 20. Head Jamb |
| 3. Sash Weather Strip | 12. Frame Weather Strip | 21. Top Interior Trim |
| 4. Top Rail Cladding | 13. Sill | 22. Head Board |
| 5. Top Rail | 14. Connecting Barb | 23. Seat Board |
| 6. Insulated Glass | 15. Bottom Interior Trim | |
| 7. Bottom Rail Cladding | 16. Sill Cover | |
| 8. Bottom Rail | 17. Screen Mesh | |
| 9. Sill Cladding | 18. Wood Screen Frame | |

45° BAY – ULTIMATE CASEMENT PUSH OUT

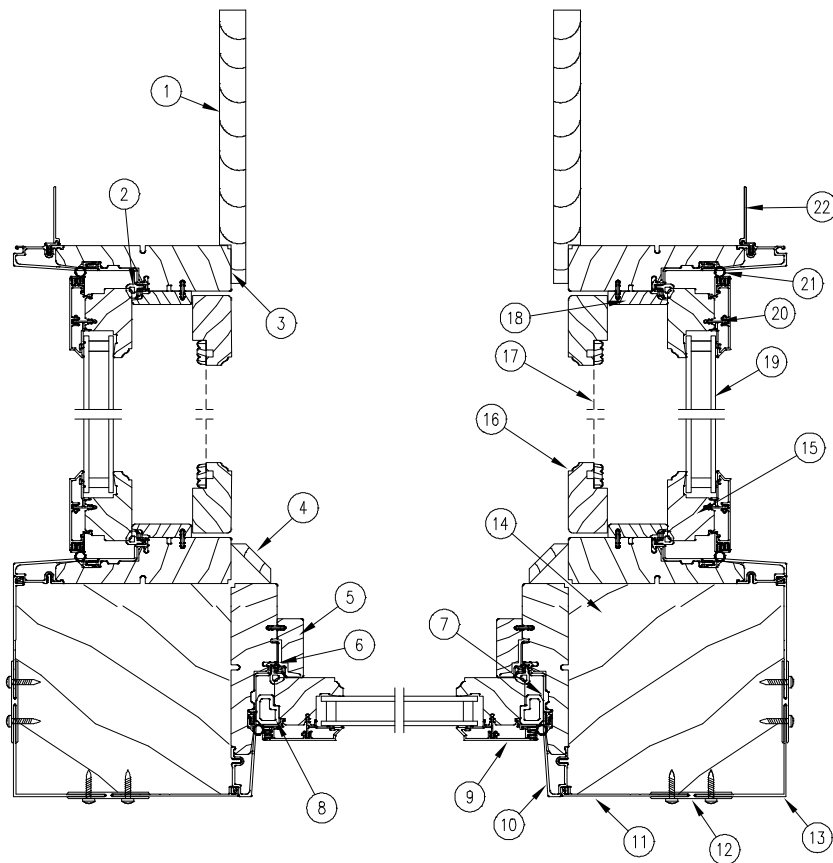


JAMB DETAIL

NOTE: Not to scale; specifications subject to change without notice.

- | | | |
|-----------------------|-----------------------------|-----------------------|
| 1. Jamb | 8. Interior Mull Trim | 15. Screen Frame |
| 2. Sash Weather Strip | 9. Stationary Side Stop | 16. Screen Mesh |
| 3. Side Stop | 10. Frame Weather Strip | 17. Return Jamb |
| 4. Insulated Glass | 11. Thermal Break | 18. Stile |
| 5. Stile Cladding | 12. Stationary Jamb Bracket | 19. Jamb Nailing Fin |
| 6. Mull Block | 13. Stationary Sash Block | 20. Sash Glazing Bead |
| 7. Mull Cap | 14. Jamb Cladding | |

90° BAY – ULTIMATE CASEMENT PUSH OUT

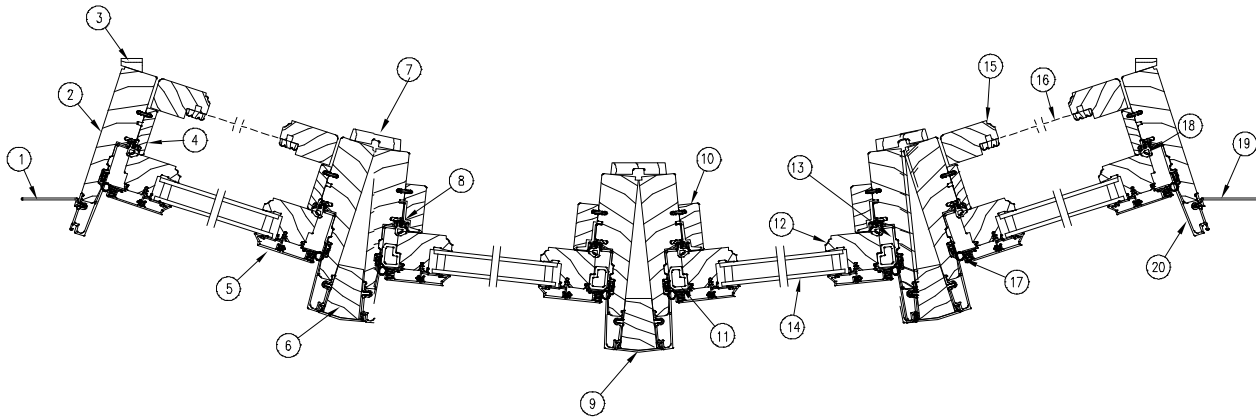


**HEAD JAMB
& SILL DETAIL**

NOTE: Not to scale; specifications subject to change without notice.

- | | | |
|----------------------------|--------------------------------|------------------------|
| 1. Return Jamb | 10. Jamb Cladding | 19. Insulated Glass |
| 2. Frame Weather Strip | 11. Clad Frame Expander | 20. Sash Glazing Bead |
| 3. Jamb | 12. Clad Mull Expander | 21. Sash Weather Strip |
| 4. Interior Mull Trim | 13. 90 Degree Bay Corner Cover | 22. Jamb Nailing Fin |
| 5. Stationary Side Stop | 14. Mull Block | |
| 6. Stationary Sash Bracket | 15. Stile | |
| 7. Frame Thermal Break | 16. Screen Frame | |
| 8. Stationary Sash Block | 17. Screen Mesh | |
| 9. Stile Cladding | 18. Jamb Stop | |

BOW – ULTIMATE CASEMENT PUSH OUT

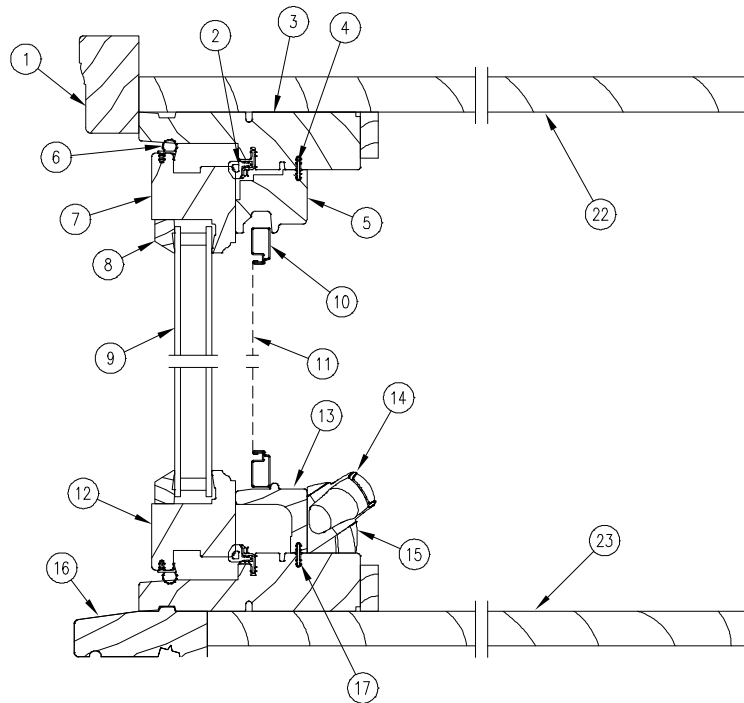


JAMB DETAIL

NOTE: Not to scale; specifications subject to change without notice.

- | | | |
|----------------------------|---------------------------|-------------------------|
| 1. Jamb Nailing Fin | 9. Clad Mull Cap | 17. Sash Weather Strip |
| 2. Jamb | 10. Side Stop | 18. Frame Weather Strip |
| 3. Return Jamb | 11. Stationary Sash Block | 19. Jamb Nailing Fin |
| 4. Side Stop | 12. Stile | 20. Jamb Cladding |
| 5. Stile Cladding | 13. Frame Thermal Break | |
| 6. Mull Block | 14. Insulated Glass | |
| 7. Interior Mull Trim | 15. Screen Frame | |
| 8. Stationary Sash Bracket | 16. Screen Mesh | |

BOW OR BAY – ULTIMATE WOOD CASEMENT

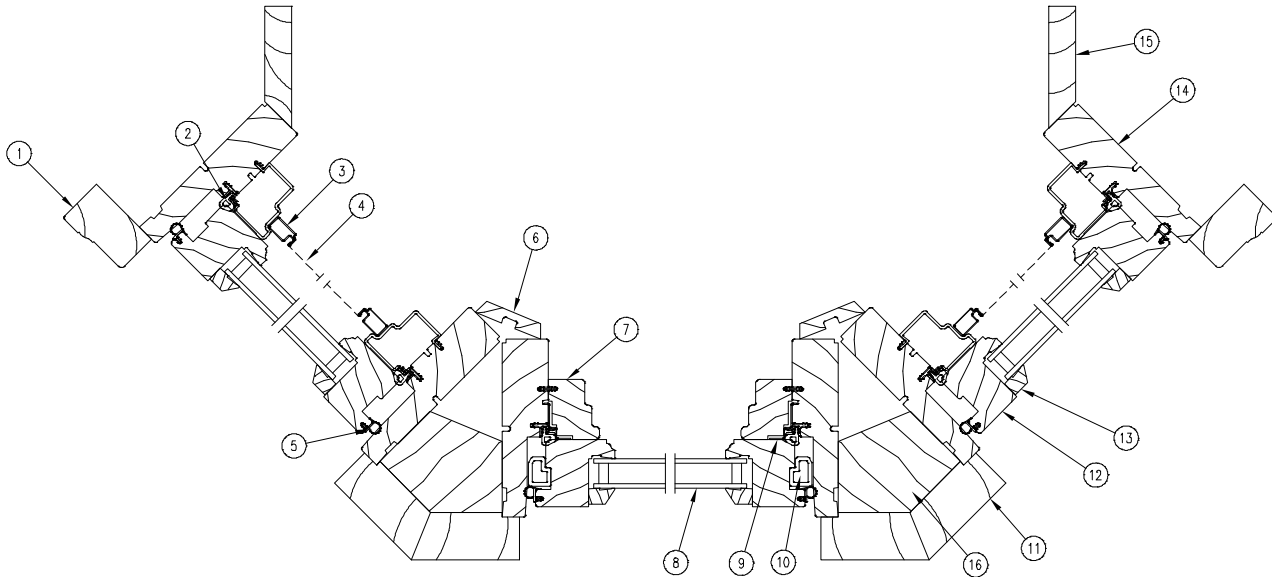


**HEAD JAMB
& SILL DETAIL**

NOTE: Not to scale; specifications subject to change without notice.

- | | | |
|---------------------------------|-----------------------------|---------------|
| 1. Head Jamb Brick Mould Casing | 10. Screen Frame | 19. Jamb |
| 2. Frame Weather Strip | 11. Screen Mesh | 20. Jamb Stop |
| 3. Head Jamb | 12. Bottom Rail | 21. Stile |
| 4. Connecting Barb | 13. Hardware Cover | 22. Headboard |
| 5. Head Jamb Stop | 14. Folding Crank Handle | 23. Seatboard |
| 6. Sash Weather Strip | 15. Folding Crank Cover | |
| 7. Top Rail | 16. Subsill | |
| 8. Glazing Bead | 17. Sill | |
| 9. Insulated Glass | 18. Jamb Brick Mould Casing | |

45° BAY – ULTIMATE WOOD CASEMENT

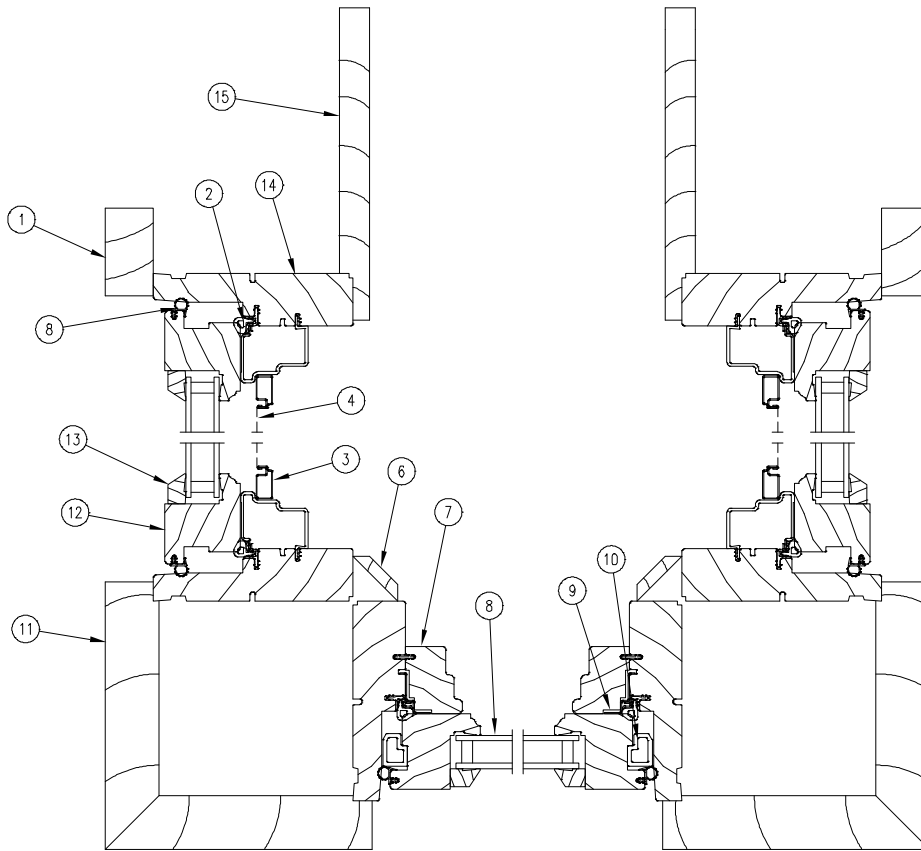


JAMB DETAIL

NOTE: Not to scale; specifications subject to change without notice.

- | | | |
|----------------------------|----------------------------|-----------------|
| 1. Side Brick Mould Casing | 8. Insulated Glass | 15. Return Jamb |
| 2. Frame Weather Strip | 9. Stationary Jamb Bracket | 16. Mull Block |
| 3. Screen Frame | 10. Stationary Sash Blocks | |
| 4. Screen Mesh | 11. Exterior Mull Casing | |
| 5. Sash Weather Strip | 12. Stile | |
| 6. Interior Mull Trim | 13. Glazing Bead | |
| 7. Side Stop | 14. Jamb | |

90° BAY – ULTIMATE WOOD CASEMENT

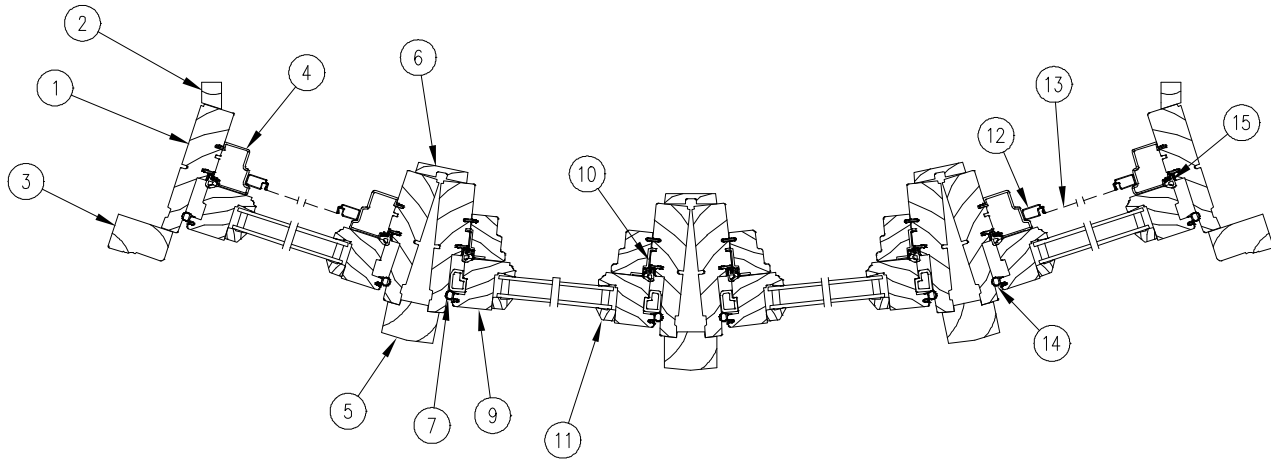


**HEAD JAMB
& SILL DETAIL**

NOTE: Not to scale; specifications subject to change without notice.

- | | | |
|------------------------|----------------------------|--------------------------|
| 1. Side Flat Casing | 6. Interior Mull Trim | 11. Exterior Mull Casing |
| 2. Frame Weather Strip | 7. Side Stop | 12. Stile |
| 3. Screen Frame | 8. Insulated Glass | 13. Glazing Bead |
| 4. Screen Mesh | 9. Stationary Jamb Bracket | 14. Jamb |
| 5. Sash Weather Strip | 10. Stationary Sash Blocks | 15. Return Jamb |

BOW - ULTIMATE WOOD CASEMENT

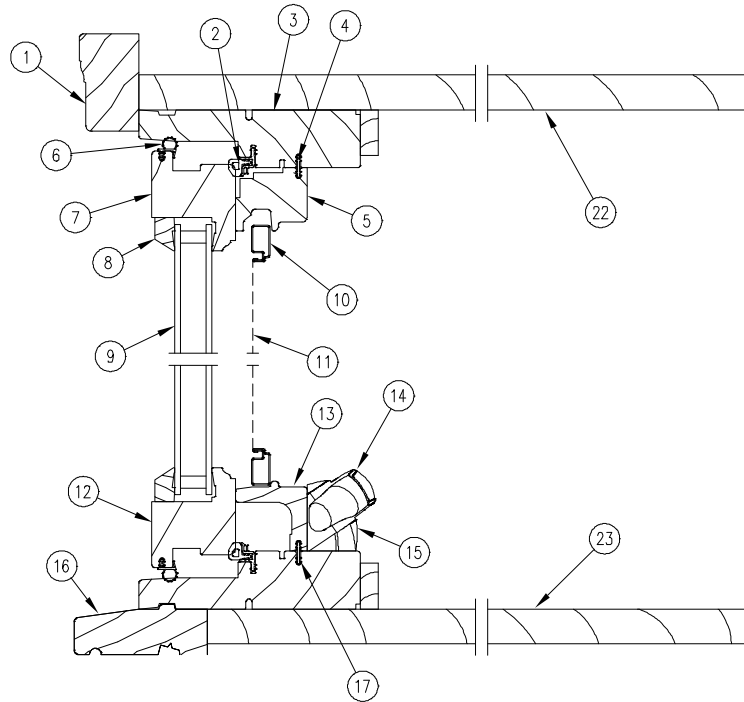


JAMB DETAIL

NOTE: Not to scale; specifications subject to change without notice.

- | | | |
|----------------------------|-----------------------------|-------------------------|
| 1. Jamb | 6. Interior Mull Trim | 11. Glazing Bead |
| 2. Return Jamb | 7. Stationary Sash Block | 12. Screen Frame |
| 3. Side Brick Mould Casing | 8. Insulated Glass | 13. Screen Mesh |
| 4. Side Stop | 9. Sash | 14. Sash Weather Strip |
| 5. Exterior Mull Casing | 10. Stationary Sash Bracket | 15. Frame Weather Strip |

BOW OR BAY – ULTIMATE WOOD CASEMENT PUSH OUT

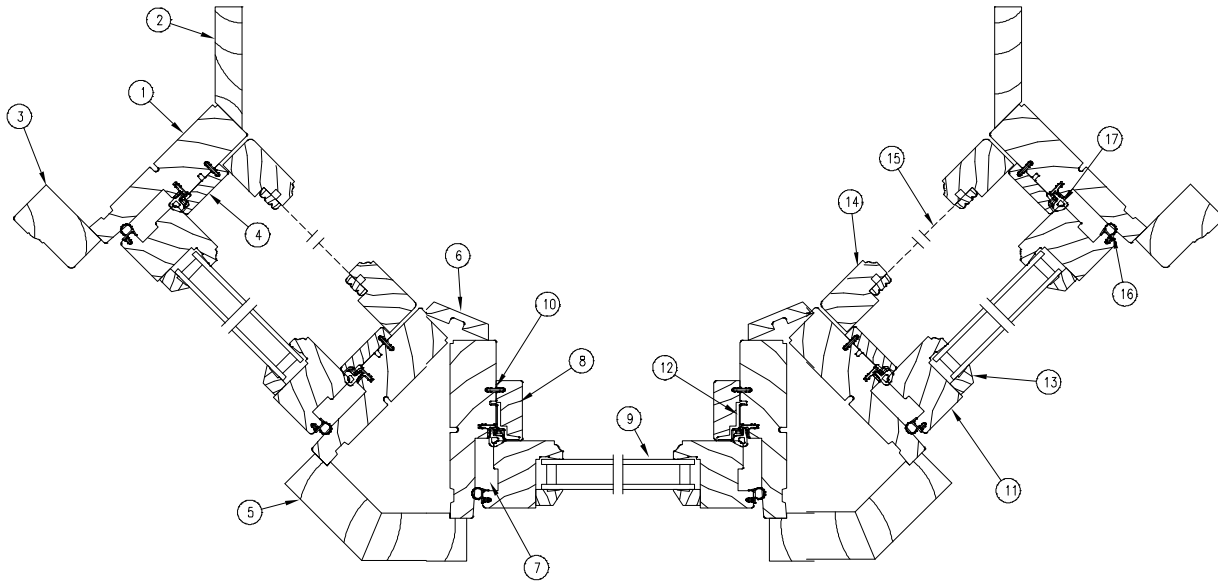


**HEAD JAMB
& SILL DETAIL**

NOTE: Not to scale; specifications subject to change without notice.

- | | | |
|---------------------------------|-----------------------------|---------------|
| 1. Head Jamb Brick Mould Casing | 10. Screen Frame | 19. Jamb |
| 2. Frame Weather Strip | 11. Screen Mesh | 20. Jamb Stop |
| 3. Head Jamb | 12. Bottom Rail | 21. Stile |
| 4. Connecting Barb | 13. Hardware Cover | 22. Headboard |
| 5. Head Jamb Stop | 14. Folding Crank Handle | 23. Seatboard |
| 6. Sash Weather Strip | 15. Folding Crank Cover | |
| 7. Top Rail | 16. Subsill | |
| 8. Glazing Bead | 17. Sill | |
| 9. Insulated Glass | 18. Jamb Brick Mould Casing | |

45° BAY – ULTIMATE WOOD CASEMENT PUSH OUT

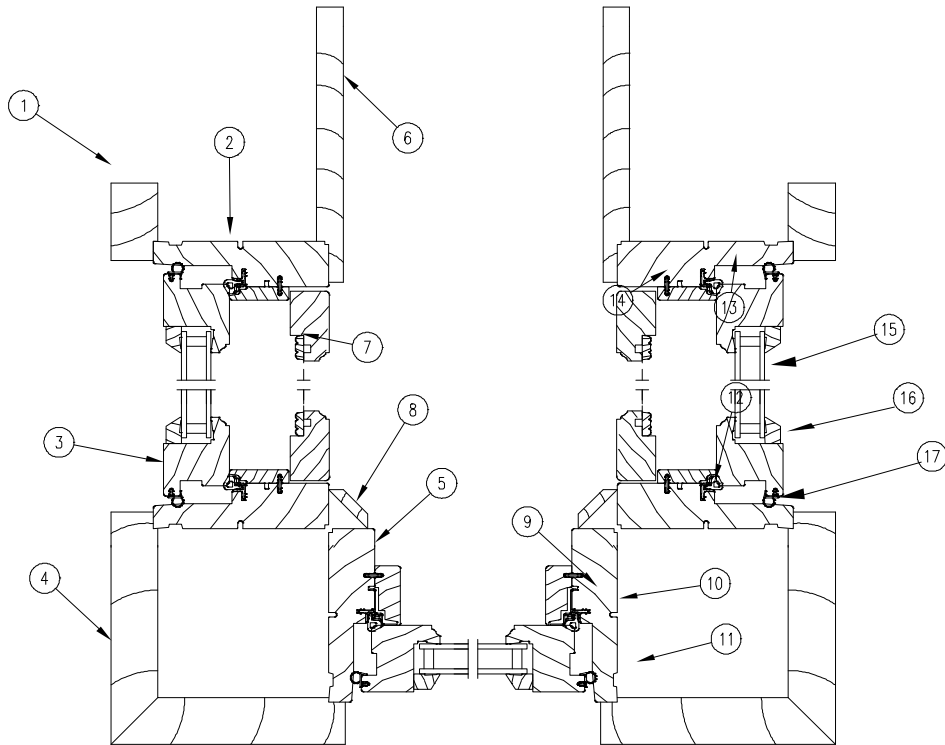


JAMB DETAIL

NOTE: Not to scale; specifications subject to change without notice.

- | | | |
|----------------------------|-----------------------------|-------------------------|
| 1. Jamb | 8. Stationary Side Stop | 15. Screen Mesh |
| 2. Return Jamb | 9. Insulated Glass | 16. Sash Weather Strip |
| 3. Side Brick Mould Casing | 10. Connecting Bar | 17. Frame Weather Strip |
| 4. Jamb Stop | 11. Stile | |
| 5. Exterior Mull Casing | 12. Stationary Sash Bracket | |
| 6. Interior Mull Trim | 13. Glazing Bead | |
| 7. Stationary Sash Block | 14. Wood Screen Frame | |

90° BAY – ULTIMATE WOOD CASEMENT PUSH OUT

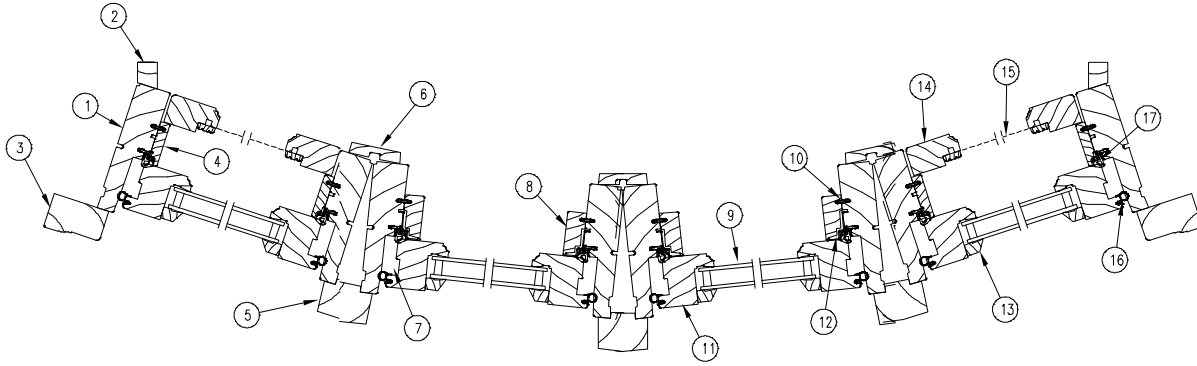


**HEAD JAMB
& SILL DETAIL**

NOTE: Not to scale; specifications subject to change without notice.

- | | | |
|-------------------------|-----------------------------|-----------------------|
| 1. Side Flat Casing | 8. Interior Mull Trim | 15. Insulated Glass |
| 2. Frame Weather Strip | 9. Stationary Side Stop | 16. Glazing Bead |
| 3. Stile | 10. Stationary Jamb Bracket | 17. Sash Weatherstrip |
| 4. Exterior Mull Casing | 11. Stationary Sash Bracket | |
| 5. Jamb | 12. Connecting Barb | |
| 6. Return Jamb | 13. Jamb Stop | |
| 7. Screen Mesh | 14. Wood Screen Frame | |

BOW – ULTIMATE WOOD CASEMENT PUSH OUT

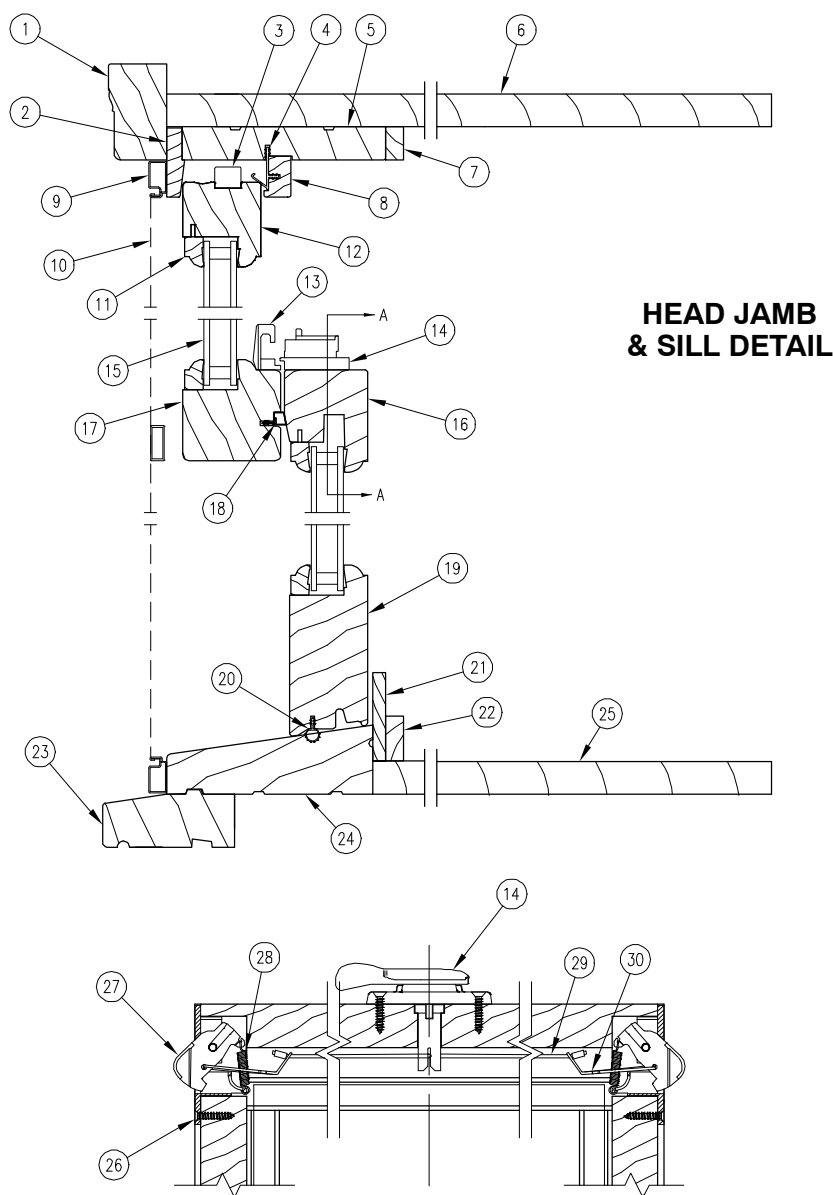


JAMB DETAIL

NOTE: Not to scale; specifications subject to change without notice.

- | | | |
|----------------------------|-----------------------------|-------------------------|
| 1. Jamb | 8. Stationary Side Stop | 15. Screen Mesh |
| 2. Return Jamb | 9. Insulated Glass | 16. Sash Weather Strip |
| 3. Side Brick Mould Casing | 10. Connecting Barb | 17. Frame Weather Strip |
| 4. Jamb Stop | 11. Stile | |
| 5. Exterior Mull Casing | 12. Stationary Sash Bracket | |
| 6. Interior Mull Trim | 13. Glazing Bead | |
| 7. Stationary Sash Block | 14. Wood Screen Frame | |

BAY - ULTIMATE WOOD DOUBLE HUNG



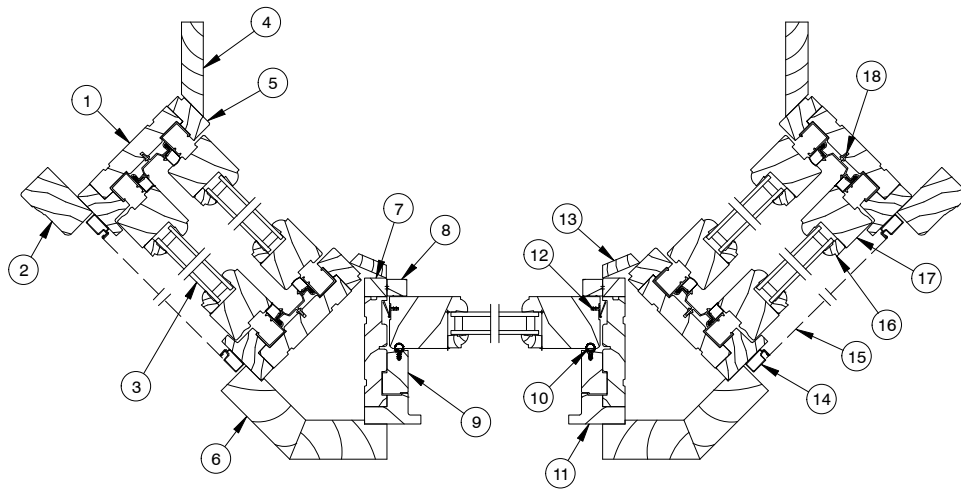
**HEAD JAMB
& SILL DETAIL**

SECTION A-A

NOTE: Not to scale; specifications subject to change without notice.

- | | | |
|-------------------------------|-------------------------------|--------------------------|
| 1. Top Brick Mould Casing | 11. Glazing Bead | 21. Sill Liner |
| 2. Top Blind Stop | 12. Top Rail | 22. Bottom Interior Trim |
| 3. Tilt Latch | 13. Sash Keeper | 23. Subsill |
| 4. Parting Stop Weather Strip | 14. Sash Lock | 24. Sill |
| 5. Head Jamb | 15. Insulated Glass | 25. Seat Board |
| 6. Head Board | 16. Bottom Check Rail | 26. End Plate |
| 7. Top Interior Trim | 17. Top Check Rail | 27. Locking Blade |
| 8. Parting Stop | 18. Check Rail Weather Strip | 28. Extension Spring |
| 9. Screen Frame | 19. Bottom Rail | 29. Operation Cord |
| 10. Screen Mesh | 20. Bottom Rail Weather Strip | 30. Pull Yoke |

BAY – ULTIMATE WOOD DOUBLE HUNG



JAMB DETAIL

NOTE: Not to scale; specifications subject to change without notice.

- | | |
|-----------------------------------|------------------------|
| 1. Jamb | 11. Exterior Blindstop |
| 2. Side Brick Mould Casing | 12. Vinyl Retainer |
| 3. Insulated Glass | 13. Interior Mull Trim |
| 4. Return Jamb | 14. Screen Frame |
| 5. Jamb Liner | 15. Screen Mesh |
| 6. Exterior Mull Casing | 16. Glazing Bead |
| 7. Picture Jamb Liner | 17. Stile |
| 8. Interior Stop | 18. Vinyl Jamb Carrier |
| 9. Exterior Filler | |
| 10. Exterior Filler Weather Strip | |

REPLACEMENT PARTS FOR BOWS AND BAYS

Bows or Bays utilize many of the parts found in their respective sections of the Parts Manual. Please refer to these for additional information.

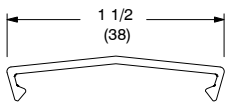
REPLACEMENT ALUMINUM BOW AND BAY PARTS

When ordering replacement aluminum parts specify:

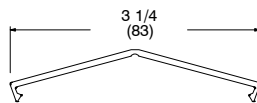
1. profile number;
2. finish.

NOTE: See Misc Mouldings chapter for available part numbers.

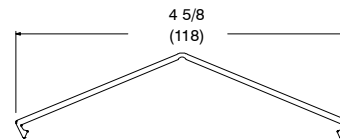
	Ultimate
Mull Cap – Bow	A124
Mull Cap – 30° Bays	A122
Mull Cap – 45° Bays	A123
Corner Cover – 90° Bays	A127
3" Frame Expander	A109
2" Mullion Expander	A108



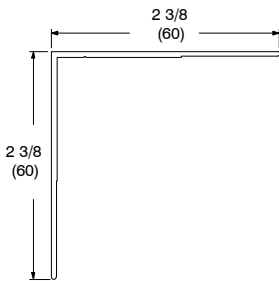
A124 – Mull Cap Bow



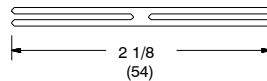
A122 – Mull Cap 30° Bays



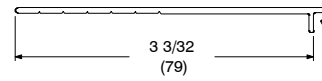
A123 – Mull Cap 45° Bays



A127 – Corner Cover 90°
Bays



A108 – 2" Mullion Expander



A109 – 3" Frame Expander

TO ORDER REPLACEMENT WOOD PARTS

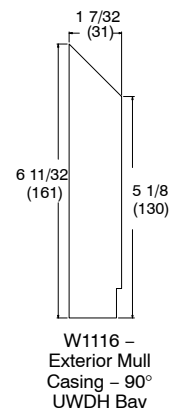
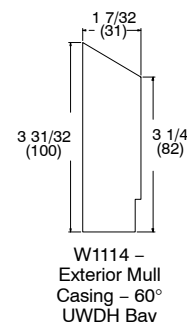
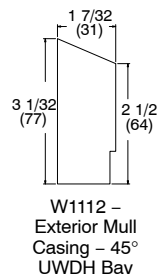
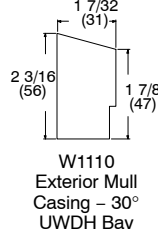
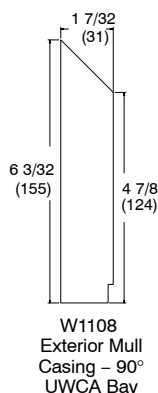
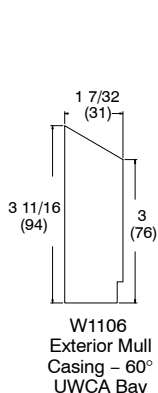
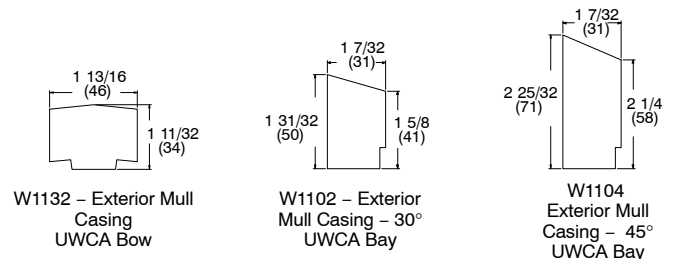
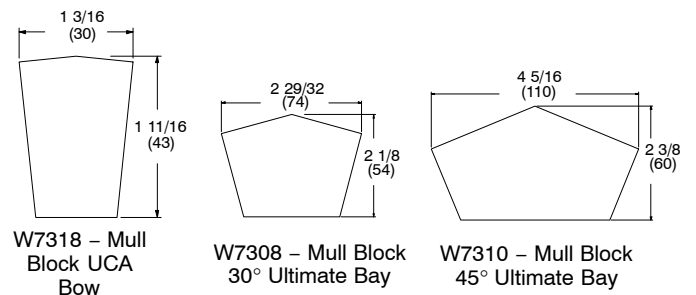
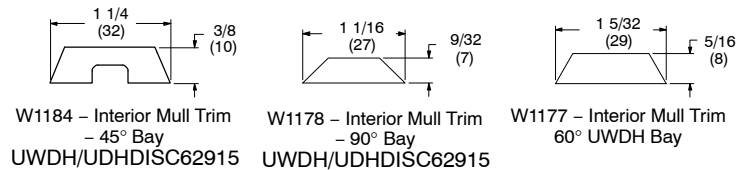
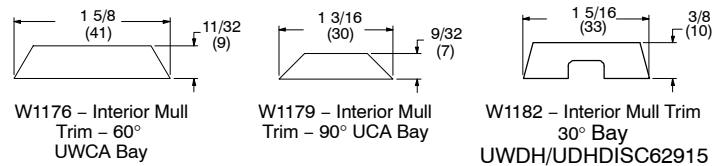
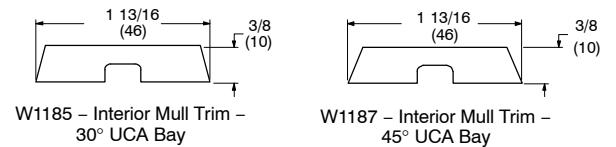
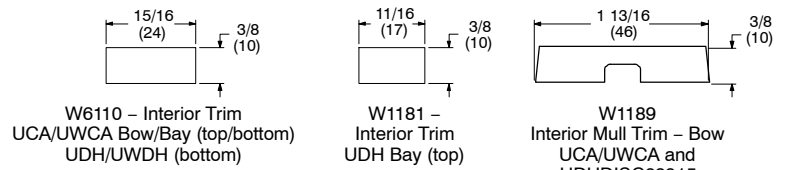
When ordering replacement wood parts specify:

1. profile number;
2. size – (call number or length);
3. finish.

	Ultimate	Ultimate Wood
Interior Trim – UWDH/UDHDISC62915 Bay (bottom) UCA/UWCA Bow/Bay (top or bottom)	W6110	W6110
Interior Trim – UWDH/UDHDISC62915 Bay (top)	W1181	W1181
Interior Mull Trim – Bow –UCA & UDHDISC62915	W1189	W1189
Interior Mull Trim – 30 degree UCA/UWCA Bay	W1185	W1185
Interior Mull Trim – 45 degree UCA/UWCA Bay	W1187	W1187
Interior Mull Trim – 60 degree UCA/UWCA Bay	---	W1176
Interior Mull Trim – 90 degree UCA/UWCA Bay	W1179	W1179
Interior Mull Trim – 30 degree Bay UWDH/UDHDISC62915	W1182	W1182
Interior Mull Trim – 45 degree Bay UWDH/UDHDISC62915	W1184	W1184
Interior Mull Trim – 90 degree Bay UWDH/UDHDISC62915	W1178	W1178
Interior Mull Trim – 60 degree Bay – UWDH	---	W1177
Mull Block – UCA Bow	W7318	---
Mull Block – 30° Ultimate Bay	W7308	---
Mull Block – 45° Ultimate Bay	W7310	---
Exterior Mull Casing – UCA Bow	---	W1132
Exterior Mull Casing – 30° UWCA Bay	---	W1102
Exterior Mull Casing – 45° UWCA Bay	---	W1104
Exterior Mull Casing – 60° UWCA Bay	---	W1106
Exterior Mull Casing – 90° UWCA Bay	---	W1108
Exterior Mull Casing – 30° UWDH Bay	---	W1110
Exterior Mull Casing – 45° UWDH Bay	---	W1112
Exterior Mull Casing – 60° UWDH Bay	---	W1114
Exterior Mull Casing – 90° UWDH Bay	---	W1116

NOTE: Some interior mull trims notched for cable as shown.

NOTE: Wood bay exterior mull casing is shipped as an assembled pair.



TO ORDER REPLACEMENT HEAD OR SEAT BOARDS

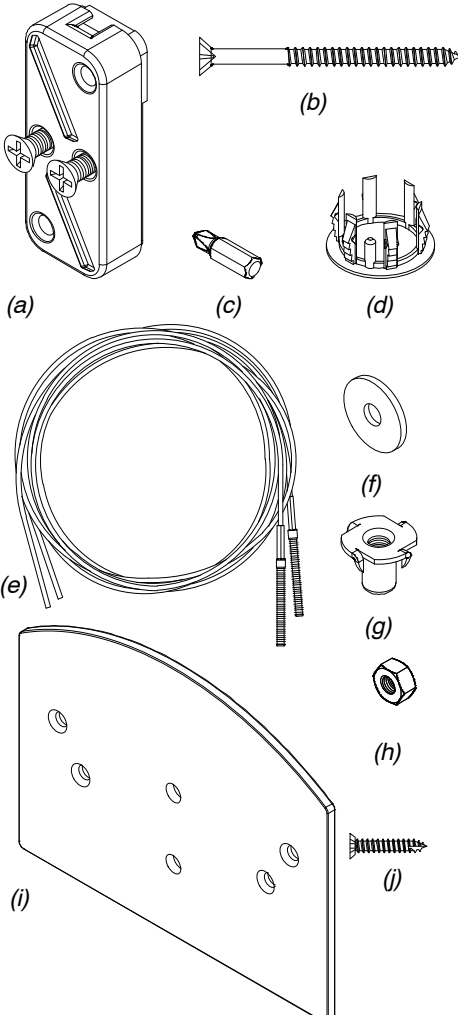
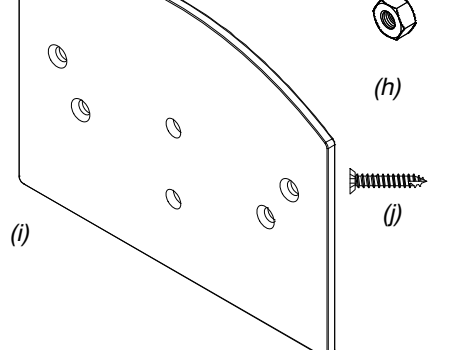
NOTE: REPLACEMENT HEAD AND SEAT BOARD MATERIAL IS RECTANGULAR IN SHAPE.

For assistance in determining size required contact Marvin Technical Support with the unit type (bow/bay), finish (aluminum/wood), angle (30/45/90, etc), unit size, projection and jamb depth.

PLYWOOD CORE/NON FINGER-JOINTED PINE VENEER HEAD AND SEAT BOARD AVAILABILITY CHART

NOTE: Part Number is for one board only – must order two if needed for head and seat board.

Stock Size	Part Number
16 x 72	18218202
16 x 96	18218204
16 x 108	18218206
18 x 72	18218402
18 x 84	18218404
18 x 108	18218406
20 x 84	18218602
20 x 96	18218604
20 x 108	18218606
20 x 120	18218608
22 x 72	18218702
22 x 84	18218704
22 x 96	18218706
22 x 108	18218708
22 x 132	18218710
24 x 72	18218902
24 x 84	18218904
24 x 96	18218906
24 x 120	18218910
24 x 132	18218912
24 x 144	18218914
26 x 84	18219002
26 x 108	18219004
27 x 120	18219104
28 x 96	18219202
28 x 108	18219204
30 x 108	18219302
30 x 132	18219304
30 x 144	18219306
42 x 168	18219510

ILLUSTRATION NOT TO SCALE	DESCRIPTION	OPER./ COLOR	PART NO.
	<p>Cable Support System – Field Installation Kit</p> <p><i>Includes:</i></p> <ul style="list-style-type: none"> 2 – Cable clamps 1/4" x 3 1/8" (zinc die-cast) (a) 4 – Heavy-shank mounting screws #12 x 3" (b) 1 – #3 Phillips drive bit (c) 2 – Adjustment hole plugs (d) 2 – Cable assemblies – 9' or 12' x 1/8" diameter (e) 2 – Fender washers – 0.25" x 0.265" x 0.06" (f) 2 – T-nuts, 3 prong 5/16" – 18" x 3/8" (g) 4 – Heavy hex nuts 1/4" – 28" (h) 2 – Installation Plates (10500560) (UDH/UWDH units only) (i) 4 – #7 x 7/8" screws (11800778) (UDH/UWDH units only) (j) 	<p>9' CM 12' CM</p> <p>9' UDH 12' UDH</p>	<p>11850134 11850135</p> <p>11850136 11850137</p>
	<p>Bow/Bay Installation Plate Package</p> <p><i>(UDH/UWDH only)</i></p> <p><i>Includes:</i></p> <ul style="list-style-type: none"> 2 – Installation plates (10500560) (i) 4 – #7 x 7/8" screws (11800778) (j) 		<p>11850133</p>