

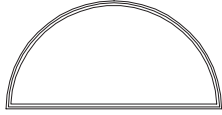
MARVIN ELEVATE™ COLLECTION
DIRECT GLAZE ROUND TOPS

Door Frame Type

True Half (RT1), Elliptical (RT29)

MO (mm)	5-11 1/2 (1816)
RO (mm)	6-0 (1829)
FS (mm)	5-11 (1803)

2-11 3/4 (908)
 3-0 (914)
 2-11 1/2 (902)



ELDGR7236

MO (mm)	5-11 1/2 (1816)
RO (mm)	6-0 (1829)
FS (mm)	5-11 (1803)

1-6 1/4 (464)
 1-6 1/2 (470)
 1-6 (457)



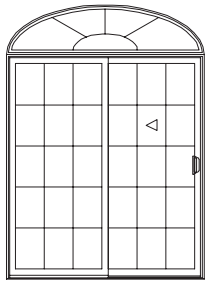
ELDGR7218

Multiple Assemblies

Sliding Patio Doors

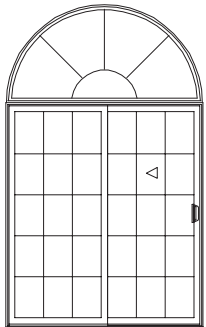
MO (mm)	5-11 1/2 (1816)
RO (mm)	6-0 (1829)
FS (mm)	5-11 (1803)

8-4 1/4 (2546)
 8-4 1/2 (2553)
 8-4 (2540)



ELDGR7218 / ELSPD6068 OX

9-9 3/4 (2991)
 9-10 (2997)
 9-9 1/2 (2985)

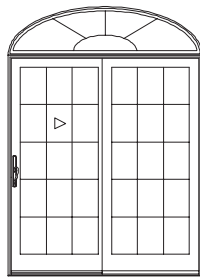


ELDGR7236* / ELSPD6068 OX

Sliding French Doors

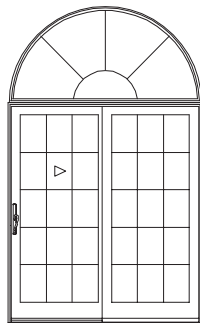
MO (mm)	5-11 1/2 (1816)
RO (mm)	6-0 (1829)
FS (mm)	5-11 (1803)

8-4 1/4 (2546)
 8-4 1/2 (2553)
 8-4 (2540)



ELDGR7218 / ELSFD6068 XO

9-9 3/4 (2991)
 9-10 (2997)
 9-9 1/2 (2985)

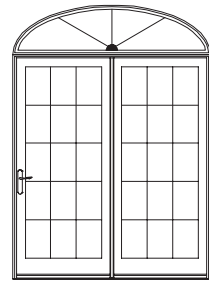


ELDGR7236* / ELSFD6068 XO

Inswing French Doors

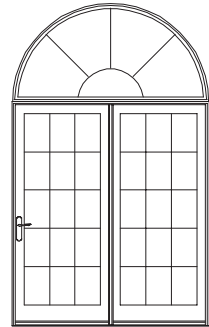
MO (mm)	5-11 1/2 (1816)
RO (mm)	6-0 (1829)
FS (mm)	5-11 (1803)

8-4 1/4 (2546)
 8-4 1/2 (2553)
 8-4 (2540)



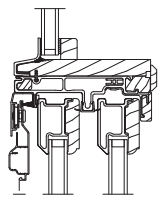
ELDGR7218 / ELIFD6068 XO

9-9 3/4 (2991)
 9-10 (2997)
 9-9 1/2 (2985)

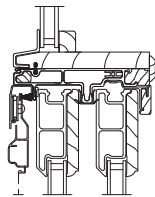


ELDGR7236* / ELIFD6068 XO

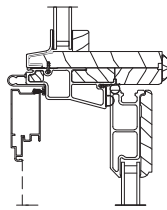
Horizontal Mullion Details



Round Top Over Sliding Patio Door



Round Top Over Sliding French Door



Round Top Over Inswing French Door

Details and Elevations not to scale.

* Assembly available field mull only.

Optional Round Top SDL, SDL with Spacer Bar and GBG are available in a standard cut, as shown on page 35. (Round Top divided lites not available in other lite cuts)

Optional Casement GBGs and SDLs are available in several lite cut variations, standard Rectangular cut shown.

ELDGR7236 and ELDGR7218 can be mullied above a CN 36 width 2W Elevate Double Hung.

For more information, please contact your Marvin representative.

For further details and drawings visit the 'Tools and Documents' section at Marvin.com.

MULTIPLE ASSEMBLIES

Multiple assemblies can be factory mullied up to 1W2H or 2W2H or 3W1H. See product Specifications for mulling limitations.

Field mull kits are available. Structural mullion reinforcement is required for some assemblies. Please consult your local Marvin representative for more information.