



REVIT LIBRARIES AND COLLECTIONS

TIPS FOR DOWNLOADING & USING REVIT FILES

MARVIN.COM

- Finding the ZIP file on the Marvin website...

- TOOLS AND DOCUMENTS page:

- Select the product's Collection or product line tab (labeled A at right; selection is indicated by a yellow line)
 - Use the filtering at the left for Windows or Doors (B) and below Windows and Doors is a drop-down listing of products
 - Select Drawings as a Resource Type and use the drop-down below it to narrow the files down to Revit (C)

- Revit files can also be found on individual product page by scrolling down and clicking on "VIEW RELATED TOOLS AND DOCUMENTS"

TOOLS AND DOCUMENTS

Our Tools and Documents resource center helps you find technical documents for all Marvin window and door products. Under each collection or product line tab, you'll find installation instructions, sizes and elevations, 3D drawings, architectural detail manuals and more. Simply select your product and refine your search to access the support you need.

A SIGNATURE ULTIMATE SIGNATURE MODERN ELEVATE COLLECTION ESSENTIAL COLLECTION SEARCH USING PREVIOUS PRODUCT NAMES

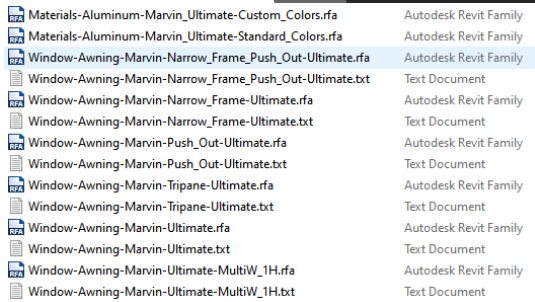
B PRODUCTS Windows Doors Ultimate Awning

C RESOURCES Documents Drawings Revit SketchUp 3D Models Dynamic Components

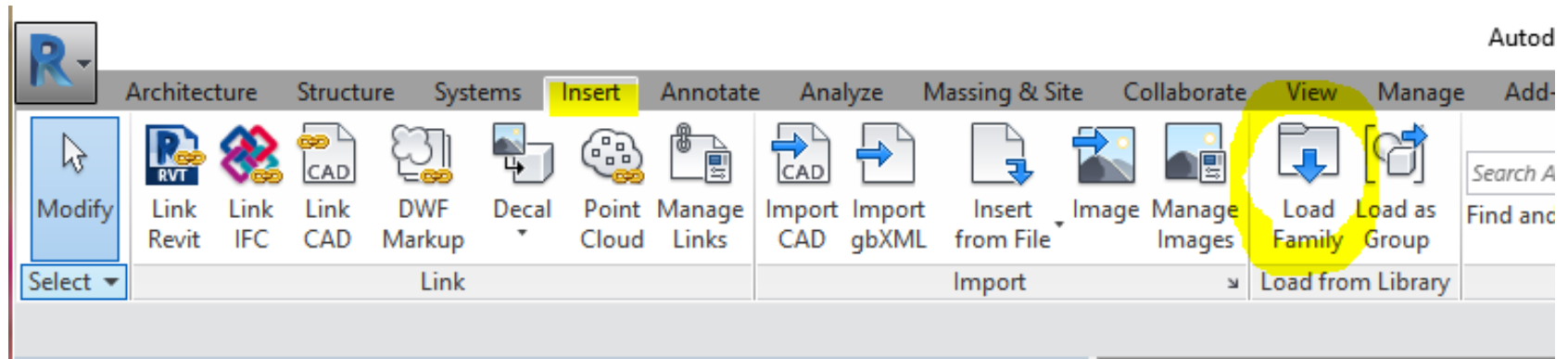
TITLE	PERFORMANCE	OPERATION	DRAWING TYPE
Clad Custom Colors	Standard	Accessories	Elevation
Tips for Using Revit Files			
Wood Window Library for Revit(2011)	Standard		
Clad Window Library for Revit(2011)	Standard		
Ultimate Awning Collection	Standard		
Ultimate Window Library	Standard		
Ultimate Wood Awning Collection	Standard		

Download and Extract the Compressed ZIP

- The file listings contains library and collection files
 - Library files contain every door and window Revit family available for a product collection or product line
 - Collection files contain all the Revit families available for a certain product type
 - The Ultimate Awning, for example, contains not only the standard awning but an awning assembly file as well as Awning Narrow Frame and Push Out
 - Besides the RFA files the ZIP file will most likely contain TXT files that contain standard sizes for each RFA
 - It is important to keep the TXT file in the same location on your computer as the RFA file to access this listing
- Click on the file to download and select Save when prompted to save the file to your Downloads folder
- In your Downloads folder, right-click the file and select “Extract All...”
- Browse to the file location you would like to save the files, such as your Revit library or Desktop to be moved to your Revit library at a later time



Materials-Aluminum-Marvin_Ultimate-Custom_Colors.rfa	Autodesk Revit Family
Materials-Aluminum-Marvin_Ultimate-Standard_Colors.rfa	Autodesk Revit Family
Window-Awning-Marvin-Narrow_Frame_Push_Out-Ultimate.rfa	Autodesk Revit Family
Window-Awning-Marvin-Narrow_Frame_Push_Out-Ultimate.txt	Text Document
Window-Awning-Marvin-Narrow_Frame-Ultimate.rfa	Autodesk Revit Family
Window-Awning-Marvin-Narrow_Frame-Ultimate.txt	Text Document
Window-Awning-Marvin-Push_Out-Ultimate.rfa	Autodesk Revit Family
Window-Awning-Marvin-Push_Out-Ultimate.txt	Text Document
Window-Awning-Marvin-Tripane-Ultimate.rfa	Autodesk Revit Family
Window-Awning-Marvin-Tripane-Ultimate.txt	Text Document
Window-Awning-Marvin-Ultimate.rfa	Autodesk Revit Family
Window-Awning-Marvin-Ultimate.txt	Text Document
Window-Awning-Marvin-Ultimate-MultiW_1H.rfa	Autodesk Revit Family
Window-Awning-Marvin-Ultimate-MultiW_1H.txt	Text Document

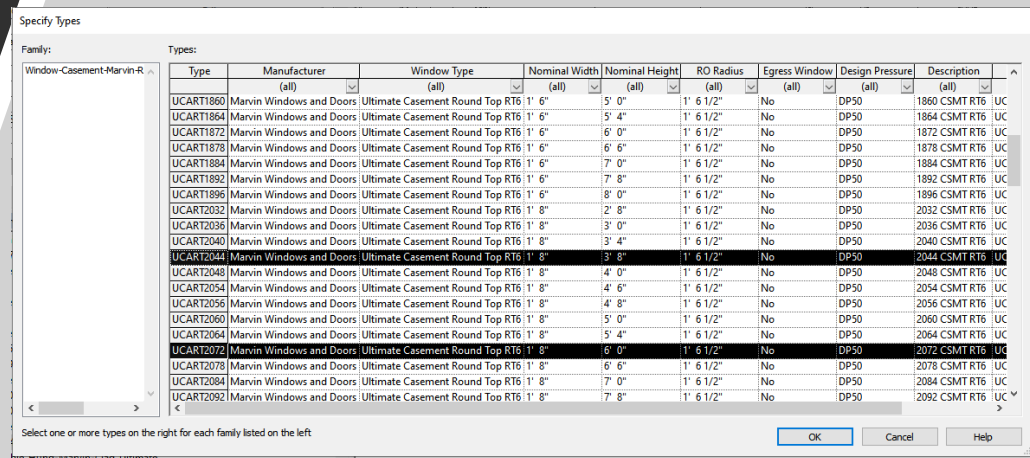
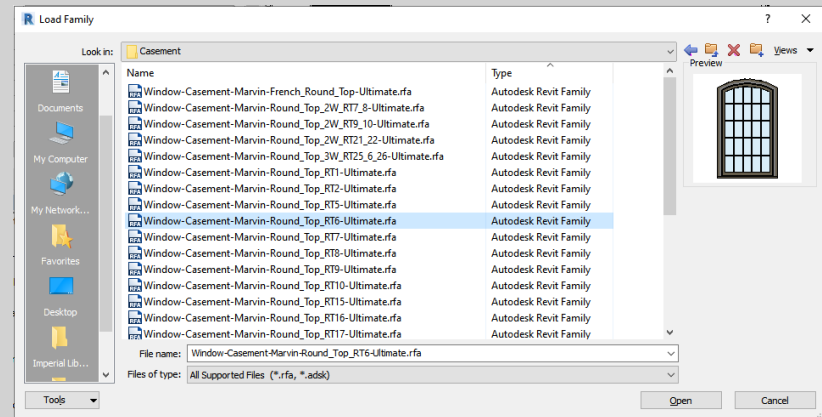


Loading a Family

- It is important to load the family from your open Revit project in order to access the standard sizes located in the text file
- In the Load Family dialog box, click on the product you would like to add from your library and click the Open button in the lower right...

Loading a Family continued...

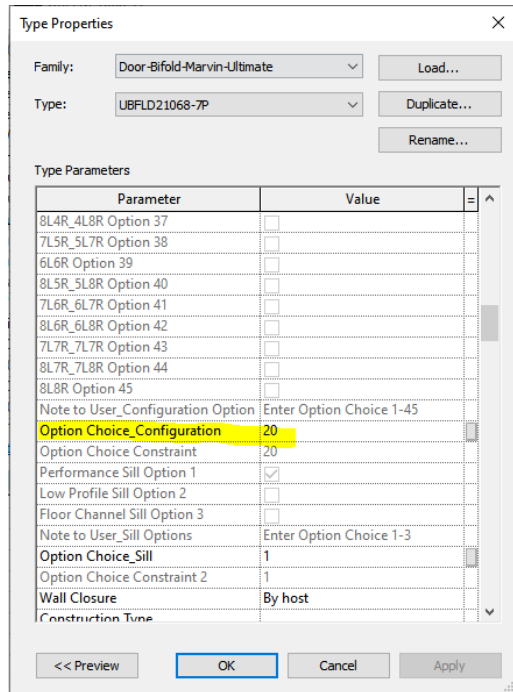
- Navigate to the folder and select the RFA file you would like to load
 - The Preview at the right is a handy way to determine a shape if you are looking at a specialty shape folder
- Click Open and select the Type you need...
 - Holding down the Ctrl button allows you to select more than one size
 - If the RFA you selected you selected does not have a TXT file associated with it, this is because that particular product does not have a standard size listing and is ordered by custom sizes only



Working in Your Project

- Once the product has been loaded to your project, it will be located in the Project Browser in the Doors or Windows categories. Double-click the Type to customize that product in the Type Properties dialog box or drag and drop it into a wall, highlight it and Edit Type from the Properties screen
- Examples:
 - Lite cut
 - Finishes
 - Glazing
 - Operation
 - Casing
 - Sill type

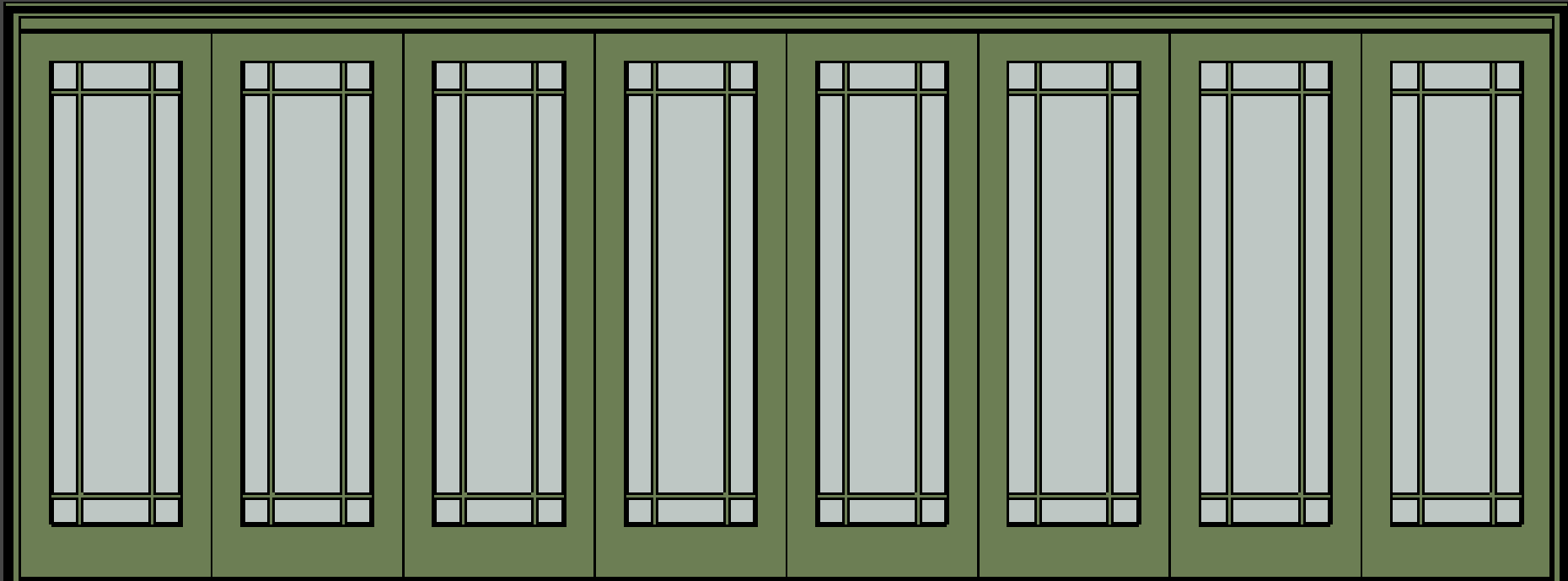
Changing Configuration...



- Typically, you can change the product's configuration once it is loaded into your project. The Ultimate Bi-Fold Door will need to have the correct number of panels selected when you are loading it into your project. You will not be able to switch from an 8 panel door to a 7 panel door, for example, by editing the type. You will be able to switch that 7 Panel door from a 4L3R_3L4R to a 7L0R_0L7R, however, from the Type Properties Construction category. Each configuration option is listed with a Option number associated with it and at the end of the listing, you can enter that Option number to change the configuration. Toggling the arrows in plan will switch direction the door is operating

Changing Lite Cut

- The standard divided lite for this particular door is 3W5H Rectangle cut but you could:
 - Deselect Muntin Visibility in the Graphics category
 - Change amount wide and/or high
 - Shown is the Prairie 9 option... The width and height of the corners are adjustable.

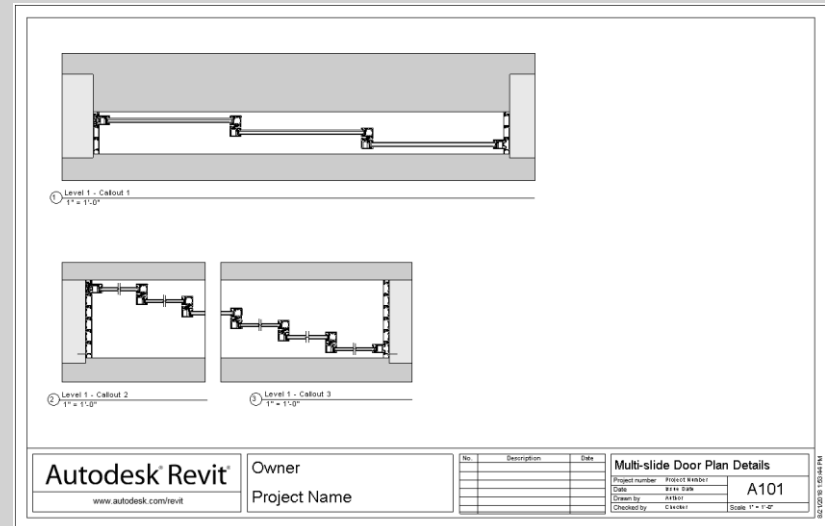


Material Families

- The Signature Ultimate line and the Elevate and Essential Collections have separate Materials files for the exterior color options
 - Loading these files into your project will give you access to them from within the door or window family

Save Time with Modern Detail Families

- With our newest product line, we had the opportunity to add native Revit detail families
 - They are found in the Details folder in all Modern compressed ZIP file
 - These Section and Plan 2D families would be loaded to your project the same way as the door or window family but will be added to the Detail Items category
 - They are easily placed over the standard family when you are working on Construction Detailing
 - Parameters can be adjusted to match the standard family



To Contact Us...



Can't find the product you need? Or, maybe you need further assistance working with our files?

E-mail MDS@marvin.com

Or, call 1-800-472-8895



We appreciate hearing your feedback and new model development requests