

Coastline Glider Windows

Unit Features.....	1
Minimum and Maximum Guidelines.....	3
Glider Section Details.....	4

Unit Features

Product Name: Coastline Glider IZ4 (formerly known as Horizontal Roller)

Abbreviation: COGL IZ4, COGL TS IZ4

Frame:

- .078" typical wall thickness
- 3.000" frame depth
- Optional Color Finishes:
 - White
 - Bronze
 - Anodized
 - Walnut
 - Hazelnut
 - Red Cinnamon
 - English Oak
 - White Kynar
 - Bronze Kynar
 - Black Kynar
 - Custom Colors available

Handing/Style:

- XO/OX Equal (1/2, 1/2) and Unequal (X 1/3, O 2/3) available
- XOX Equal (1/3, 1/3, 1/3) and Unequal (1/4, 1/2, 1/4) available
- Custom Ratios available

Screen:

- Fiberglass Mesh

Divided Lite Options:

- SDL/GBG Patterns:
 - Equal Rectangular
 - Prairie
- Simulated Divided Lite Profiles:
 - Ogee (ext) / 1" Flat (int)
 - Square (ext) / 1" Flat (int)
 - 1" Flat (ext) / 1" Flat (int)
 - 2" Flat (ext) / 2" Flat (int)
- GBG Profile:
 - 13/16" sightline

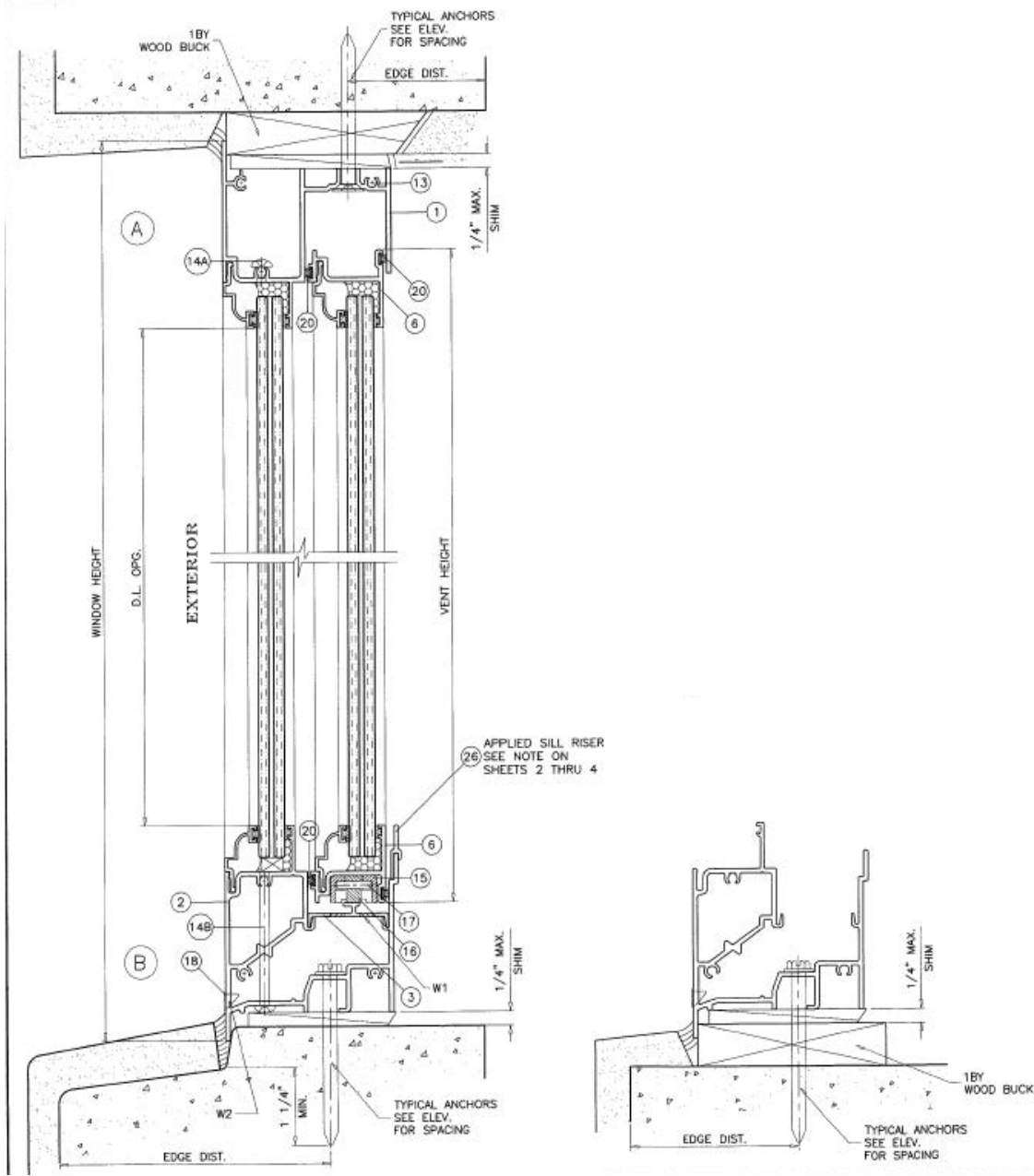
Glass and Glazing:

- Glass Options:
 - 5/16" HS Laminated PVB
 - 7/16" HS Laminated PVB or SGP
 - 11/16" Insulated Laminated PVB
- Glass Tint Options
 - Clear
 - Grey Tint
 - Bronze Tint
 - Green Tint
 - Azurelite Blue Tint
 - LoE 366 Clear
 - LoE 366 Grey
 - LoE 366 Bronze
 - LoE 366/ i89
 - Solarban 70 Clear
 - Solarban 70 Grey
 - Solarban 70 Bronze
- Options:
 - White Interlayer
 - Pat 62 Obscure
 - Rain
 - Glue Chip
 - Double Tint
 - Neat
 - Ogee Glazing Beads

Minimum and Maximum Guidelines

PRODUCT ABBREVIATION	MAX FRAME AREA (sq ft)	MAX FRAME WIDTH (in)	MAX FRAME HEIGHT (in)	MAX DESIGN PRESSURE (PSF)	OPERATION
COGL IZ4	60.5	139	76	+ 60 / -60	Horizontal Sliding
COGL TS IZ4	76	173	76	+ 60 / -60	Horizontal Sliding
Max Area Cannot Be Exceeded, Reference Florida Product Approvals For Actual Design Pressure					

Section Details Glider



Section Details Glider

