

Coastline Pivot Doors

Unit Features.....	1
Minimum and Maximum Guidelines.....	3
Handing Details.....	3
Section Details.....	4

Unit Features

Product Name: Coastline Outswing Pivot Door IZ4, Coastline Inswing Pivot Door IZ4

Abbreviation: COIPIVOTD IZ4, COOPIVOTD IZ4

Frame Material and Construction:

- Concealed Closer with 105° hold-open
- Pivot point offset 16"-24" from frame
- Inswing and Outswing Available
- .078" typical wall thickness
- 4.000" frame depth
- Installation screw holes are pre-punched for easy installation
- Optional Color Finishes:
 - White
 - Bronze
 - Anodized
 - Walnut
 - Hazelnut
 - Red Cinnamon
 - English Oak
 - White Kynar
 - Bronze Kynar
 - Black Kynar
 - Custom Colors available

Panels

- Top Rail: 4" or 8"
- Bottom Rail: 4" or 8"
- Ogee Glass Stops available

Swing/Style/Hinge Options:

- Hinge Left Outswing
- Hinge Right Outswing
- Hinge Left Inswing
- Hinge Right Inswing

Sill:

- Low-rise ½" threshold standard (not water rated)

Hardware:

- Finish Options:
 - Brushed Stainless Steel
 - Polished Stainless Steel
 - Matte Black
- Pull Options:
 - 24" Offset Ladder Pull
 - 36" Offset Ladder Pull
 - 60" Offset Ladder Pull
 - 84" Offset Ladder Pull
 - 18" Rectangular Offset Ladder Pull
 - 36" Rectangular Offset Ladder Pull
 - 48" Rectangular Offset Ladder Pull
 - 60" Rectangular Offset Ladder Pull
 - 96" Rectangular Offset Ladder Pull
 - Commercial Lock with no pulls

Divided Lites Options:

- 1 Lite
- Equal Rectangular (1" Ogee)
- Prairie (1" Ogee)
- Custom and Arch Applied (1", 2", 3", 4", 5", 6", 8" Square)

Glass and Glazing:

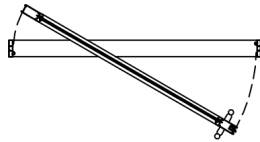
- Glass Options
 - 7/16" HS Laminated SGP
 - 1" HS Insulated Laminated SGP
- Glass Tint Options
 - Clear
 - Grey Tint
 - Bronze Tint
 - Green Tint
 - Azurelite Blue Tint
 - LoE 366 Clear
 - LoE 366 Grey
 - LoE 366 Bronze
 - LoE 366/ I-89
 - Solarban 70 Clear
 - Solarban 70 Grey
 - Solarban 70 Bronze
- Options:
 - Pat 62 Obscure
 - Rain
 - Glue-Chip
 - Neat
 - Double Tint

Minimum/Maximum Guidelines

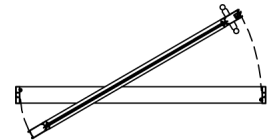
PRODUCT ABBREVIATION	MAX FRAME AREA (sq ft)	MAX FRAME WIDTH (in)	MAX FRAME HEIGHT (in)	MAX DESIGN PRESSURE (PSF)
COPIVOTD IZ4	54	74	120	+ 60 / -60
COPIVOTD IZ4	54	74	120	+ 60 / -60
Max Area Cannot Be Exceeded, Reference Florida Product Approvals For Actual Design Pressure				

Handing Details

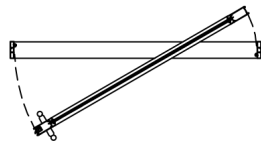
Hinge Left Outswing



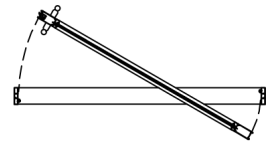
Hinge Left Inswing



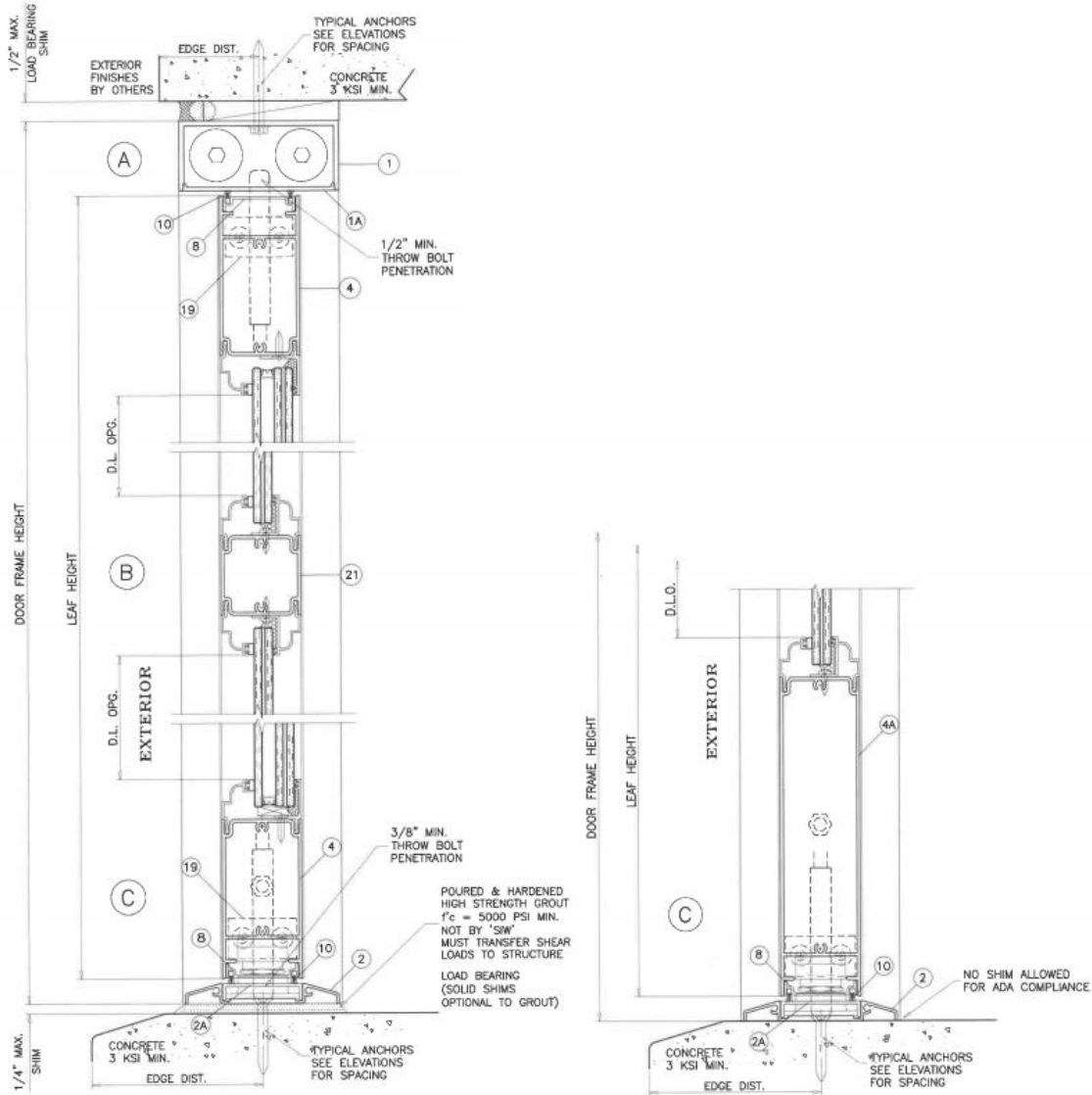
Hinge Right Outswing



Hinge Right Inswing



Section Details



Section Details

