

Ultimate Swinging French Door Collection

Unit Features.....	1
Standard Divided Lite Options.....	6
Optional Interior Square Simulated Divided Lite	7
Inswing Handing Configurations.....	8
Outswing Handing Configurations.....	9

Unit Features

Swinging Door Collection consists of:

UIFD: Ultimate Inswing French Door and IZ3

UOFD: Ultimate Outswing French Door and Z3/IZ4

UIAF: Ultimate Inswing French Door Arch Top and IZ3

UOAF: Ultimate Outswing French Door Arch Top

UIFD2.25: Ultimate Inswing French Door and IZ3

UOFD2.25: Ultimate Outswing French Door 2 1/4 inch and IZ3/IZ4

UIFD2.25AT: Ultimate Inswing French Door Arch Top and IZ3

UOFD2.25AT: Ultimate Outswing French Door Arch Top 2 1/4" inch and IZ3/IZ4

NOTE: IZ3 units not available with CE mark.

Frame:

- Frame thickness: 1 1/16" (27)
- Frame width: 4 9/16" (116)
- Fiberglass reinforced pultruded sill with water shed and weep system
 - Standard color: beige
 - Optional color: bronze
- Optional interior sill liner of Oak, Mahogany or Cherry for UIFD, UOFD
- Standard Oak sill liner for UIFDAT, UOFDAT, UIFD2.25, UIFD2.25AT, UOFD2.25 and UOFD2.25AT
- Optional interior sill liner of Mahogany or Cherry for UIFDAT, UOFDAT, UIFD2.25, UIFD2.25AT, UOFD2.25, UOFD2.25AT

Panel:

- Panel thickness: 1 3/4" (44)
 - Top rail height and stile width: 4 3/4" (121)
 - Sidelite stile width: 3" (76)
 - Traditional French Door bottom rail height: 8 1/8" (206)
 - Contemporary Door bottom rail height: 4 3/4" (121)
 - Bottom rail:
 - Stave core is used for Pine, Cherry, Douglas Fir and Mahogany
 - Laminated veneer lumber (LVL) is used for White Oak
 - Stationary stile and hinged stile:
 - LVL is used for White Oak, Mahogany and Cherry
 - Stave core is used for Pine and Douglas Fir
 - Locking stile: all wood species use LVL
 - Top rail:
 - LVL is used for White Oak
 - Solid wood for Mahogany and Cherry
 - Stave core is used for Pine and Douglas Fir
 - Intermediate rail: solid wood for all species
- Panel thickness: 2 1/4"(57)
 - Top rail height and stile width: 6" (152)
 - Bottom rail height: 8 1/8" (206)
 - Bottom rail, stationary stile, locking stile, hinged stile and top rail for all species use LVL
 - Top rail is solid wood for arch top doors
 - Intermediate rail: solid face laminated
 - Standard interior wood cope sticking: ogee
 - Optional interior wood cope sticking: square

NOTE: Contemporary doors will default to square sticking with an option to select ogee

- Panels are interior glazed

Raised/Flat Panel Option:

- Standard stamped raised panel uses .080" (2) aluminum to the exterior with foam backing
- Core is medium density fiberboard (MDF) with non finger-jointed wood laminated to the interior

NOTE:

- Panel option not available with Contemporary door
- Ultimate Inswing / Outswing French Door 2 1/4" and Ultimate Inswing / Outswing French Door 2 1/4" Arch Top products with Raised and Flat panel options are not available with CE mark.

Unit Features

Hardware:

- Multi-point lock: applied to active and optional on inactive panels, 2 3/8" (60) backset, with latch engagement and three locking points, with option of keyed alike.
 - Dead bolt
 - Head jamb bolt
- Manual head and foot bolt standard on inactive panel with option of multi-point lock
- Multi-point lock is standard on 2 1/4" inactive panels
- Optional mortise lock and passage latch on active panel
- Optional prep for passage latch with deadbolt
- Optional no lock/no bore
- Optional lever handle set: active, inactive and dummy
- Traditional handle set finish options:
 - Powder coat finishes: Satin Taupe, White, Dark Bronze, Matte Black
 - Metal finishes: Satin Chrome, Polished Chrome, Antique Brass, Oil Rubbed Bronze, Brass PVD, Oil Rubbed Bronze PVD, Satin Nickel PVD
- Contemporary handle set finish options:
 - Painted finishes: Matte Black, Dark Bronze,
 - Metal finishes: Oil Rubbed Bronze PVD, Satin Nickel PVD

Hinges:

- Adjustable hinges
 - Standard finish: Satin Taupe with a steel substrate
 - Optional powder coat finish: Gold Tone, Dark Bronze, Silver Frost, White, Matte Black
 - Optional finish: Antique Brass, Satin Chrome, Oil Rubbed Bronze, Polished Chrome, Brass PVD, Satin Nickel PVD, Oil Rubbed Bronze PVD
 - Dimensions are 4 1/4"(108) x 3 3/4"(95) with 3/8"(10) radius corners
 - Adjustment is 3/16"(5) for horizontal and vertical of panels in frame
 - Quantity per panel for UIFD, UOFD
 - Unit rough opening height ≤ 96" (2438) = three hinges per panel
 - Optional four hinges for unit rough opening height ≥ 86 1/2" (2197) and ≤ 96"(2438)
 - Quantity per panel for UIFDAT, UOFDA
 - Unit rough opening height ≤ 80" (2032) = three hinges per panel
 - Unit rough opening height ≥ 84" (2134) and ≤ 96"(2438) = four hinges per panel
 - Quantity per panel for UIFD2.25, UOFD2.25, UIFD2.25AT, and UOFD2.25AT
 - Unit rough opening height ≤ 86 1/2"(2197) = three hinges per panel
 - Unit rough opening height > 86 1/2" (2197) and ≤ 96 (2438) = four hinges per panel
 - Unit rough opening height > 96" (2438) = five hinges per panel
 - Optional four hinges for unit rough opening height ≤ 96"(2438)
- Optional butt hinge for 1 3/4" doors
 - Default finish (Inswing): Satin Taupe with steel substrate; Optional finishes: Brass Plated, Solid Brass, Antique Brass, Oil Rubbed Bronze, Satin Chrome, Satin Nickel, White, Stainless Steel, Satin Nickel PVD
 - Default finish (Outswing): Solid Brass or Stainless Steel with non-removable pin
 - Dimensions: 4" (102) x 4" (102) with radius corners
 - Quantity per panel
 - Unit rough opening height < 86 1/2" (2198) = three hinges per panel
 - Unit rough opening height ≥ 86 1/2" (2198) up to ≤ 110 1/2"(2807) = four hinges per panel
 - Unit rough opening height > 110 1/2" (2807) = five hinges per panel
- Optional ball bearing hinges for 2 1/4" doors and 1 3/4" doors
 - Default finish is Satin Chrome with a brass substrate; Optional finish: Solid Brass, Bronze with a brass substrate or stainless steel (2 1/4" only)
 - Dimensions:
 - For 2 1/4" doors, 4 1/2" (114) x 4 1/2" (114) with square corners.
 - For 1 3/4" doors, 4 1/2" (114) x 4 1/2" (114) with radius corners
 - Quantity per panel
 - Unit rough opening height < 86 1/2" (2198) = three hinges per panel
 - For 2 1/4" doors: Unit rough opening height ≥ 86 1/2" (2198) up to ≤ 96"(2438) = four hinges per panel
 - For 2 1/4" doors: Unit rough opening height > 96" (2438) = five hinges per panel
 - For 1 3/4" doors: Unit rough opening height ≥ 86 1/2" (2198) up to ≤ 110 1/2"(2807) = four hinges per panel
 - For 1 3/4" doors: Unit rough opening height > 110 1/2" (2807) = five hinges per panel

Unit Features**Optional Screens: (Inswing Units only)**

- Standard swinging screen
 - Black hinges, two for doors under 90" (2286), three for doors 90" (2286) and over
 - Handle includes latch with exterior handle and internal locking mechanism
 - Colors: Black, Bronze, Satin Nickel, Brass, or Satin Taupe
 - Screen color will match exterior frame color of clad units
- Ultimate swinging screen
 - Screen and tempered glass insert
 - Four concealed hinges per panel are factory installed within the Z-bar
 - Handle includes latch with exterior handle and internal locking mechanism
 - Colors: Bronze, Satin Nickel, Brass, or Satin Taupe
- Screen color will match exterior frame color of clad units
- Standard screen mesh: charcoal fiberglass
- Optional screen mesh: bronze, charcoal aluminum, silver aluminum black aluminum, or charcoal high transparency fiberglass mesh (CH Hi-Tran)

Weather Strip:

- Weather strip at all panel perimeter points
- Standard color: beige
- Optional color: black

Mulling:

- For mull performance, refer to the General Mulling chapter of the ADM.

Unit Features Continued**Glass and Glazing:**

- Glazing method: Insulating - Dual Pane or Tri Pane
- Glazing seal: Silicone glazed
- Standard glass: Insulating Dual Pane Low E2 with Argon or Air
- Optional dual-pane glass make-ups:
 - Low E1 Argon or Air,
 - Low E3 Argon or Air,
 - Low E2/ERS Argon or air,
 - Low E3/ERS Argon or air, clear, tints, tempered, obscure, and decorative glass options
- Optional Tri Pane glass make-ups:
 - Low E2/E1 Argon, Krypton-Argon, or Air
 - Low E3/E1 Argon, Krypton-Argon, or Air
 - Low E1 Argon, Krypton-Argon, or Air
- Available glass types:
 - Laminated
 - Tempered
 - Obscure
- Tints:
 - Bronze
 - Gray
 - Green
 - Reflective Bronze
- Decorative glass options:
 - Frost
 - Reed
 - Narrow Reed
 - Rain
 - Sandblasted
 - Glue Chip
- All glass is of select quality complying with ASTM C 1036. Tempered or Laminated safety glazing per CPSC 16 CFR 1201. Insulating glass is manufactured and tested to pass level ASTM 2190 and is IGCC certified.
- IZ3 has tempered exterior pane.
- For additional specialty glazing options, please contact your Marvin representative.

CE Optional Glazing:

- Glazing seal: silicone beading, exterior
- Standard glazing: Low E2 Argon or Air
- Optional glazing: clear insulating, Low E3 Argon or Air, Low E1 Argon or Air, Low E2/ERS Argon or Air, Low E3/ERS Argon or Air, Laminated, Laminated Bronze tint, Laminated Gray tint, Laminated Green tint, Laminated White tint, Sandblasted
- Glass panes available in 3, 4, and 6 mm thicknesses
- Insulating glass will be altitude adjusted with capillary tubes for higher elevations, Argon gas not included

NOTE: *CE Mulling* is available with CE marked muller assemblies 1W2H with one in-sash or direct glaze over operable door up to 127" (3226) x 100" (2540) maximum size.

Unit Features

Interior Shades: (Rectangular units only)

- Cellular shade is attached to the door with a removable traditional or contemporary profile system that houses the cellular shade system and mechanism
 - Shade cartridge is removable and replaceable
 - One shade surround per panel daylight opening
 - Control: top down, bottom up

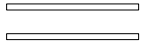
NOTE: Contemporary surround will default with Short Bottom Rail Door

- Wood frame surround:
 - Species: Pine, Mahogany, Mixed Grain Douglas Fir, Vertical Grain Douglas Fir, Cherry, or White Oak
 - Pull bar: wood wrapped extruded aluminum
 - Shade track
 - Standard color: beige
 - Optional colors: white or bronze
 - Optional shade cover
 - Short shade cover: doors up to 7-0 height
 - Tall shade cover: doors 7-0 height and over
- Cellular shade:
 - Single non-fire rated hexagonal honeycomb (cellular) 3/4" (19)
 - Semi-opaque fabric (light filtering)
 - Colors: Driftwood, Marigold, Almond, Rose, Denim, Biscuit, Champagne, Moss, Cinnamon, Silver, White, Stone, Tan, Ivory, Eggshell
 - Opaque fabric (blackout)
- Colors: White, Stone, Tan, Ivory, Eggshell
- Order options:
 - Ship separate: shade system packages separately and ships same time as the unit
 - Ship later: shade system shipped at a later date chosen by the customer
 - Shade option must be chosen at the time of unit order
 - Fabric opacity and color can be chosen at later date
 - Retro fit: ordered as a complete shade system through configured parts

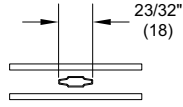
Lock Status Sensor (Optional):

- Available for UIFD, UIFD2.25, UIFD2.25AT, UOFD, IOFD2.25, UOFD2.25AT.
- Refer to **Lock Status Sensor Installation Instructions** for requirements.
- To achieve a closed and locked status, The Lock Status Sensor requires that the door must be closed to depress the anti-slam mechanism so that the door can be manually locked. It allows easy integration with home automation systems using a wireless connection.
 - Requires purchase of secondary transmitter for operation. Marvin will prep for this option. Wired connection not available.
- Wireless Lock Status Sensor is located within the width and height of the operating panel.
- Sensor Location will always be integrated into the locking hardware system.

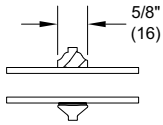
Standard Divided Lite Options



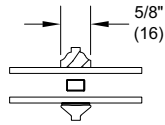
Insulating Glass



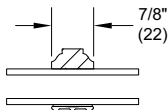
Aluminum 23/32"
Contour GBG



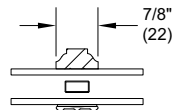
5/8" SDL



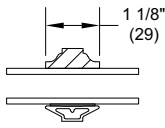
5/8" SDL
W/Spacer



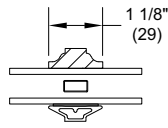
7/8" SDL



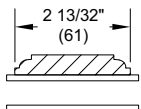
7/8" SDL
W/Spacer Bar



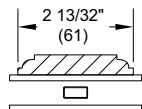
1 1/8" SDL



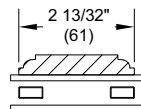
1 1/8" SDL
W/Spacer Bar



2 13/32" SDL

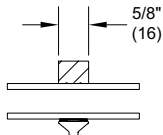


2 13/32" SDL
W/One Spacer Bar

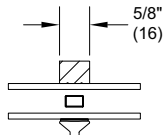


2 13/32" SDL
W/Two Spacer Bars

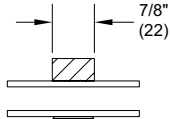
Optional Interior Square Simulated Divided Lite



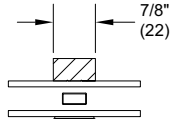
5/8" SDL



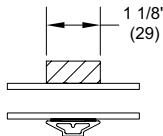
5/8" SDL
W/Spacer



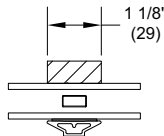
7/8" SDL



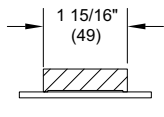
7/8" SDL
W/Spacer Bar



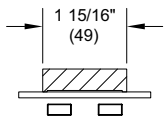
1 1/8" SDL



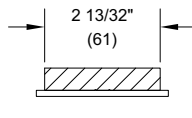
1 1/8" SDL
W/Spacer Bar



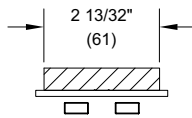
1 15/16" SDL



1 15/16" SDL
W/Two Spacer Bars



2 13/32" SDL

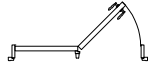


2 13/32" SDL
W/Two Spacer Bars

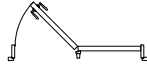
Inswing Handing Configurations



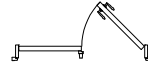
XX R



OX L



XO R



OX R



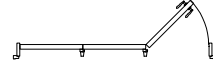
XX L



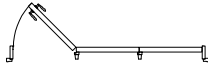
XO L



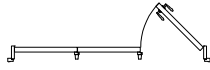
OOO



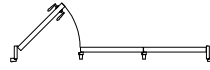
OOX L



XOO R



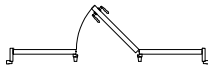
OOX R



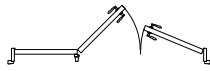
XOO L



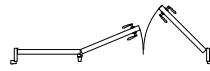
OXO L



OXO R



OXX L



OXX R



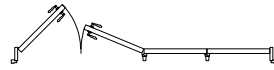
XXO R



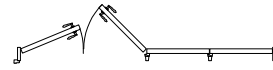
XXO L



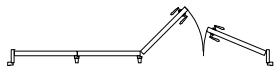
OOOO



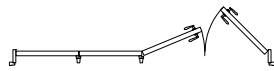
XXOO L



XXOO R



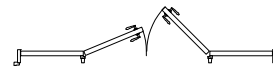
OOX L



OOX R

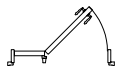


OXXO L

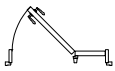


OXXO R

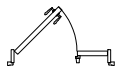
Entrance Systems



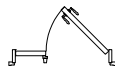
OX L



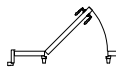
XO R



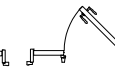
XO L



OX R



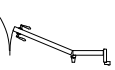
OXO L



OXO R



OXXO L



OXXO R

1 3/4" Archtop Doors

2 1/4" Rectangular and Archtop Doors



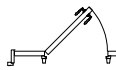
O



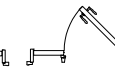
XL



XR



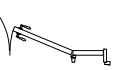
OXO L



OXO R



OXXO L



OXXO R



OO



XX R

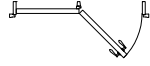


XX L

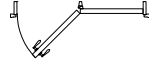
Outswing Handing Configurations



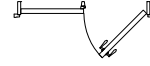
XX L



OX R



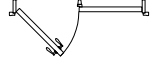
XO L



OX L



XX R



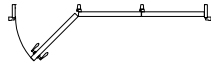
XO R



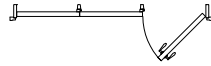
OOO



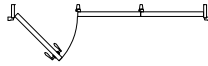
OOX R



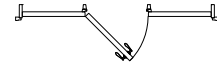
XOO L



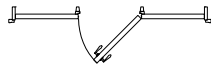
OOX L



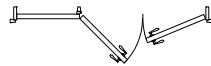
XOO R



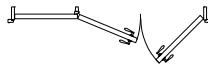
OXO R



OXO L



OXX R



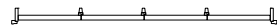
OXX L



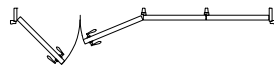
XXO L



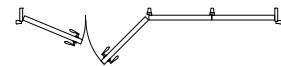
XXO R



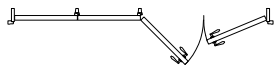
OOOO



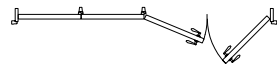
XXOO R



XXOO L



OOX R



OOX L

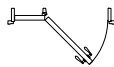


OXXO R

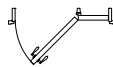


OXXO L

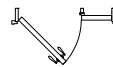
Entrance Systems



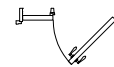
OX R



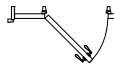
XO L



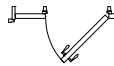
XO R



OX L



OXO R



OXO L

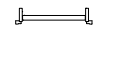


OXXO R

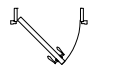


OXXO L

**1 3/4" Archtop Doors
2 1/4" Rectangular and Archtop Doors**



O



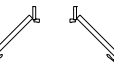
XR



XL



XX L



XX R