

# Skycove

|   |    |
|---|----|
| Unit Features: Skycove .....                              | 1  |
| Minimum and Maximum Guidelines and Certified Sizes .....  | 3  |
| Standard Size Measurements .....                          | 4  |
| Measurement Conversions .....                             | 5  |
| Seat board and Cushion Measurements .....                 | 6  |
| Section Details: Section View .....                       | 7  |
| Section Details: Front Elevation View .....               | 8  |
| Section Details: Plan View .....                          | 9  |
| Section Details: Section View (Triple-Pane) .....         | 10 |
| Section Details: Front Elevation View (Triple-Pane) ..... | 11 |
| Section Details: Plan View (Triple-Pane) .....            | 12 |



## Unit Features: Skycove

Skycove: SC P

### Frame:

- The Skycove unit is assembled on top of an integral welded steel infrastructure
- High-Density Fiberglass frame profiles
- Aluminum cover profiles
- Color Options
  - Interior options: Ebony, Stone White
  - Exterior options: Ebony, Bronze, Gunmetal, Stone White
- Marvin-provided insulation, base insulation, trim, and fasteners
- Factory Finished Seat Board option
  - Max seat board depth is 32"
  - Pine default. Optional Mixed Grain Douglas Fir (MGDF) and Red Oak
  - Finishes
    - White and Designer painted interior finished available in Pine only
    - Clear and stained finishes available on seat boards (all species)
- Screens and Combinations not available.

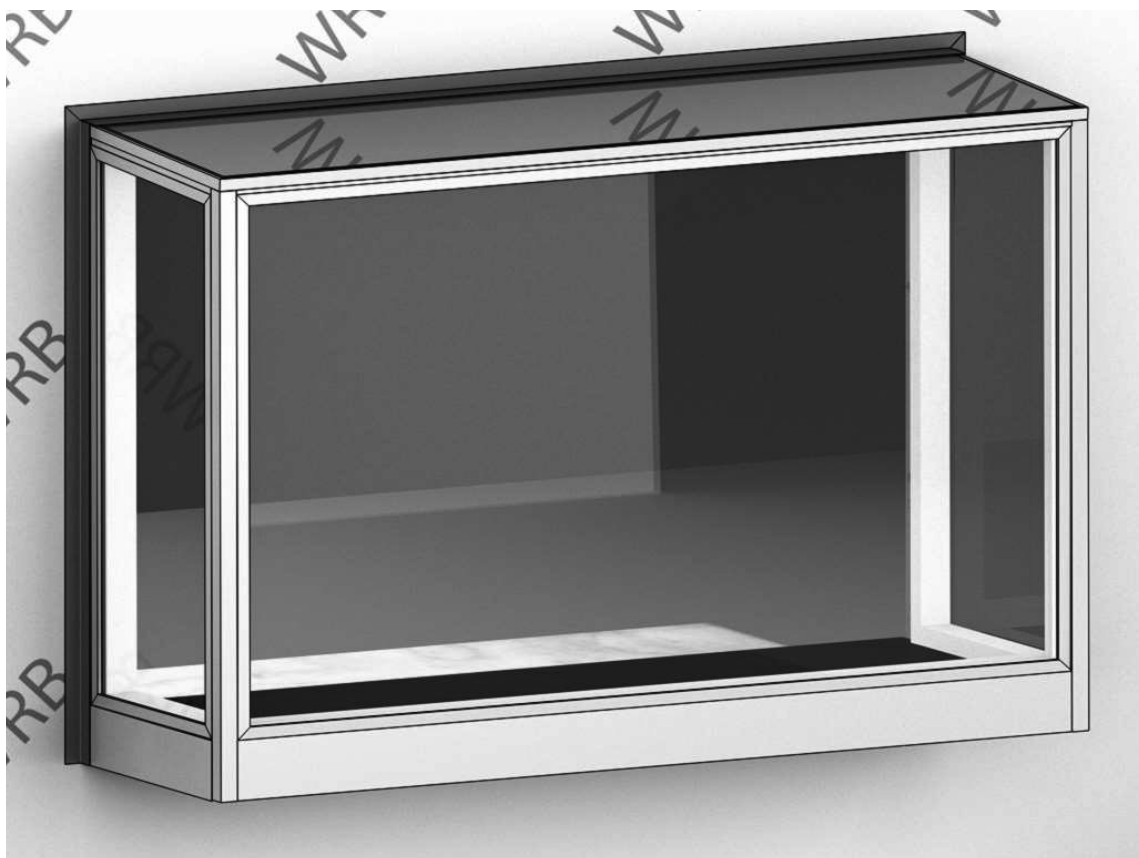
### Glass and Glazing:

- Horizontal glass (on top)
  - Top angle 4 degrees.
  - Low E3
  - Dual-pane, tempered, exterior, laminated interior
  - Surface 1 Laminated Glass
  - 7/8" IG thickness
- Vertical
  - Low E2, Low E3
  - Dual-pane, tempered
  - Triple-pane option on CN7870 only
    - Top glass remains dual-pane-tempered exterior, laminated interior
- Glazing seal: Black silicone beading, exterior
- Black Stainless-Steel Spacer Bar
- Dual-pane insulating glass thickness: 15/16" (23).
- Triple-pane insulating glass thickness: 1 1/4" (32).
- Insulating Glass Coatings: Low E2, Low E3, Low E1\*, Low ELR\*
- Gas Fill: Argon, Air\*
- Non-Certified Options\*
  - Other Glass Types: Gray or Bronze Tint, Obscure, Frost
  - Low ELR units to 5.7mm sizes and below
  - Tint limited to 5.7mm pane thickness and 15/16" glass make-up.
  - Frost is limited to 5.7mm and 3.9mm pane thicknesses
  - Obscure (Pattern 62) glass is limited to 4.7mm pane thickness and below
- Glass panes are based on overall unit size and may be 3.1, 3.9, 4.7, 5.7, and 8.0 mm thicknesses.

\*NFRC values are not available for these options, they are still WDMA rated to CW-PG65-SP.

### Installation:

- Exterior installation only
- Reference installation instructions for more details
- Reference the Verification document for Rough Opening requirements



### Declaration for Safety Glazing

All Marvin Skycove units use glazing products that meet safety glazing requirements for the top pane. Both the top exterior tempered pane and bottom laminated pane are SGCC certified and meet tempered safety glazing requirements specified: ANSI Z97.1 2015, 16 CFR 1201 CII, CAN/CGSB 12.1 – 2017. The safety laser logos are permanently etched onto each pane of tempered and laminated glass but may be obscured by framing or covers on this product. This notice will serve as confirmation that these products will meet the requirements, even when the logo is obscured.

**Minimum and Maximum Guidelines and Certified Sizes**

**Minimum and Maximum Sizes**

| Configuration | Rough Opening |        |            |        |           |        |            |        | Projection |       |           |       |
|---------------|---------------|--------|------------|--------|-----------|--------|------------|--------|------------|-------|-----------|-------|
|               | Min Width     |        | Min Height |        | Max Width |        | Max Height |        | Min Depth  |       | Max Depth |       |
|               | in            | mm     | in         | mm     | in        | mm     | in         | mm     | in         | mm    | in        | mm    |
| Skycove       | 76 1/4        | (1937) | 67 47/64   | (1720) | 99 1/4    | (2521) | 83 47/64   | (2127) | 25 1/2     | (648) | 25 1/2    | (648) |

NOTE: Four Call Number sizes are available, two heights and two widths.  
 Custom sizes not available.

**Certified Sizes and Ratings**

| Product | Air Test to PSF | Water Tested to psf | Structural Tested to psf | Certification Rating | Design Pressure | Overall Width |        | Overall Height |        |
|---------|-----------------|---------------------|--------------------------|----------------------|-----------------|---------------|--------|----------------|--------|
|         |                 |                     |                          |                      |                 | in            | mm     | in             | mm     |
| SC P    | 1.57            | 9.82                | 97.5                     | CW-PG65-SP           | DP65            | 101           | (2565) | 93 1/2         | (2375) |

Certification based upon AAMA/WDMA/CSA 101/I.S.2/A440-08

## Standard Size Measurements

### Standard Size Charts

| Configuration |             | RO     |        |          |        | Projection |       |
|---------------|-------------|--------|--------|----------|--------|------------|-------|
| Width         | Height      | Width  |        | Height   |        | Depth      |       |
| Call Number   | Call Number | in     | mm     | in       | mm     | in         | mm    |
| 78            | 70          | 76 1/4 | (1937) | 67 47/64 | (1720) | 25 1/2     | (648) |
| 78            | 86          | 76 1/4 | (1937) | 83 47/64 | (2127) | 25 1/2     | (648) |
| 101           | 70          | 99 1/4 | (2521) | 67 47/64 | (1720) | 25 1/2     | (648) |
| 101           | 86          | 99 1/4 | (2521) | 83 47/64 | (2127) | 25 1/2     | (648) |

### Standard Size Width Dimensions

| Call Number Widths | Masonry Opening |        | Rough Opening |        | Frame Size |        | Interior Opening |        |
|--------------------|-----------------|--------|---------------|--------|------------|--------|------------------|--------|
|                    | in              | mm     | in            | mm     | in         | mm     | in               | mm     |
| 78                 | 78 1/2          | (1994) | 76 1/4        | (1937) | 78         | (1981) | 69 3/32          | (1755) |
| 101                | 101 1/2         | (2578) | 99 1/4        | (2521) | 101        | (2565) | 92 3/32          | (2339) |

### Standard Size Height Dimensions

| Call Number Heights | Masonry Opening |        | Rough Opening |        | Frame Size |        | Interior Opening |        |
|---------------------|-----------------|--------|---------------|--------|------------|--------|------------------|--------|
|                     | in              | mm     | in            | mm     | in         | mm     | in               | mm     |
| 70                  | 70 1/2          | (1791) | 67 47/64      | (1720) | 70         | (1778) | 61 35/64         | (1563) |
| 86                  | 86 1/2          | (2197) | 83 47/64      | (2127) | 86         | (2184) | 77 35/64         | (1970) |

### Standard Estimated Size Weights and Crating Dimensions

| Call Number    | Weight (lbs.) |       |          | Crate Measurements (inches) |       |        |
|----------------|---------------|-------|----------|-----------------------------|-------|--------|
|                | Unit          | Crate | Combined | Depth                       | Width | Height |
| CN7870         | 728           | 319   | 1047     | 37 1/2                      | 85    | 79 1/2 |
| CN7870 Tripane | 804           | 319   | 1123     | 37 1/2                      | 85    | 79 1/2 |
| CN7886         | 824           | 342   | 1166     | 37 1/2                      | 85    | 95 1/2 |
| CN10170        | 920           | 320   | 1240     | 37 1/2                      | 108   | 79 1/2 |
| CN10186        | 965           | 391   | 1356     | 37 1/2                      | 108   | 95 1/2 |

### Standard Size Daylight Opening Dimensions

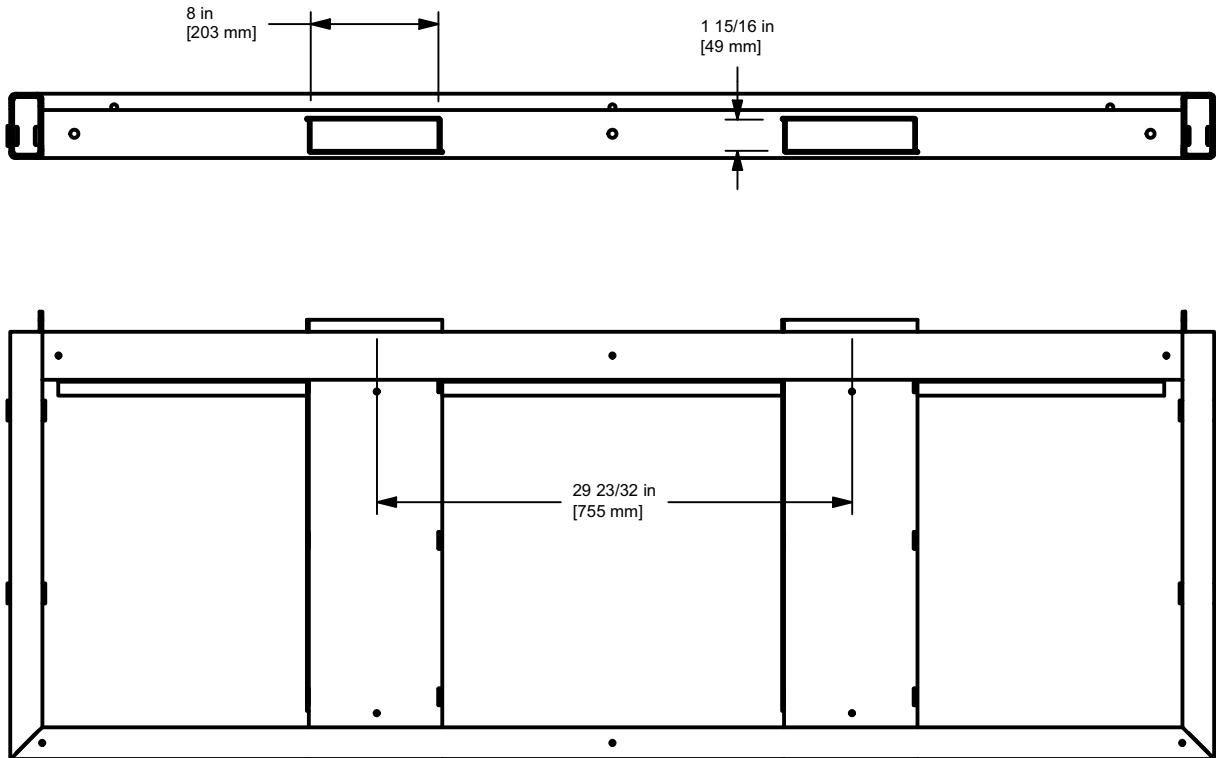
| Configuration |             | DLO      |       |             |        |             |        |         |        |         |       |          |        |          |        |
|---------------|-------------|----------|-------|-------------|--------|-------------|--------|---------|--------|---------|-------|----------|--------|----------|--------|
| Width         | Height      | A1/A3    |       |             |        |             |        | A2      |        |         |       | B2       |        |          |        |
|               |             | Width    |       | Height (HS) |        | Height (LS) |        | Width   |        | Height  |       | Width    |        | Height   |        |
| Call Number   | Call Number | in       | mm    | in          | mm     | in          | mm     | in      | mm     | in      | mm    | in       | mm     | in       | mm     |
| 78            | 70          | 19 45/64 | (502) | 59 17/32    | (1518) | 58 5/32     | (1483) | 69 3/32 | (1762) | 17 9/16 | (448) | 72 17/64 | (1843) | 58 13/64 | (1484) |
| 78            | 86          | 19 45/64 | (502) | 75 17/32    | (1926) | 74 5/32     | (1891) | 69 3/32 | (1762) | 17 9/16 | (448) | 72 17/64 | (1843) | 74 13/64 | (1892) |
| 101           | 70          | 19 45/64 | (502) | 59 17/32    | (1518) | 58 5/32     | (1483) | 92 3/32 | (2348) | 17 9/16 | (448) | 95 17/64 | (2429) | 58 13/64 | (1484) |
| 101           | 86          | 19 45/64 | (502) | 75 17/32    | (1926) | 74 5/32     | (1891) | 92 3/32 | (2348) | 17 9/16 | (448) | 95 17/64 | (2429) | 74 13/64 | (1892) |

A1/A3 - flankers, A2 - top glass, B2 - center glass

**Measurement Conversions**

| Unit Measurements                |               | Width    |         | Height    |         |
|----------------------------------|---------------|----------|---------|-----------|---------|
| From                             | To            | in       | mm      | in        | mm      |
| <b>Rough Opening</b>             |               |          |         |           |         |
| Masonry Opening                  | Rough Opening | -2 1/4   | -(57)   | -2 3/4    | -(70)   |
| Interior Opening (w/ seat board) | Rough Opening | + 7 5/32 | + (182) | + 6 13/64 | + (158) |
| Frame Size                       | Rough Opening | -1 3/4   | -(44)   | -2 1/4    | -(57)   |

**Fork Pocket Dimensions**



For ease of installation, all Skycove units come with the fork pocket dimensions shown above, regardless of call number size. These pockets can be used for equipment to safely lift the unit into the opening so it can be secured to the wall before the equipment backs away.

**Seat board and Cushion Measurements**

**Seatboard Dimensions**

| Width<br>Call<br>Number | Projection Depth |       | Seatboard Depth      |                     | Seatboard Width |        | Seatboard<br>Thickness |      |
|-------------------------|------------------|-------|----------------------|---------------------|-----------------|--------|------------------------|------|
|                         | in               | mm    | in                   | mm                  | in              | mm     | in                     | mm   |
| 78                      | 25 1/2           | (648) | 21.500 + RO<br>Depth | (546) +<br>RO Depth | 69.53           | (1766) | 1/2                    | (13) |
| 101                     | 25 1/2           | (648) | 21.500 + RO<br>Depth | (546) +<br>RO Depth | 92.53           | (2350) | 1/2                    | (13) |

NOTE: RO Depth: Exterior Water Barrier to Interior Finished Wall. See detail on following page.

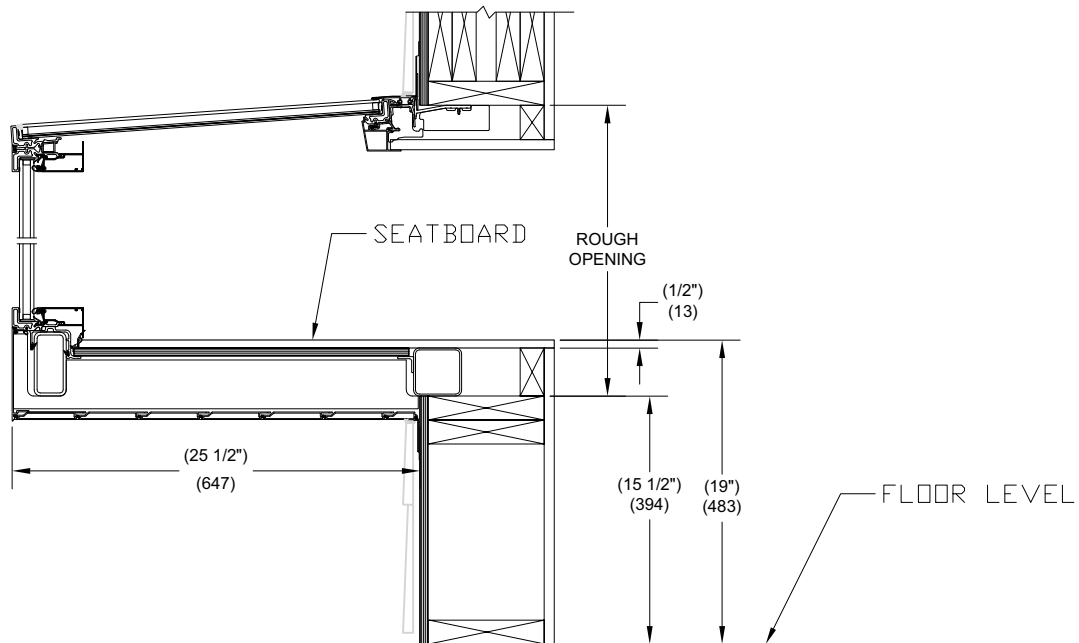
If it is desired for seatboard or cushion to extend beyond the interior finished wall, add that dimension to the RO depth when ordering.

**Cushion Dimensions**

| Width<br>Call<br>Number | Cushion Depth        |                     | Cushion Width |        | Min Cushion<br>Thickness* |      |
|-------------------------|----------------------|---------------------|---------------|--------|---------------------------|------|
|                         | in                   | mm                  | in            | mm     | in                        | mm   |
| 78                      | 20.800 + RO<br>Depth | (528) + RO<br>Depth | 69            | (1753) | 2                         | (51) |
| 101                     | 20.800 + RO<br>Depth | (528) + RO<br>Depth | 92            | (2337) | 2                         | (51) |

\*Minimum cushion thickness to be flush with interior covers.

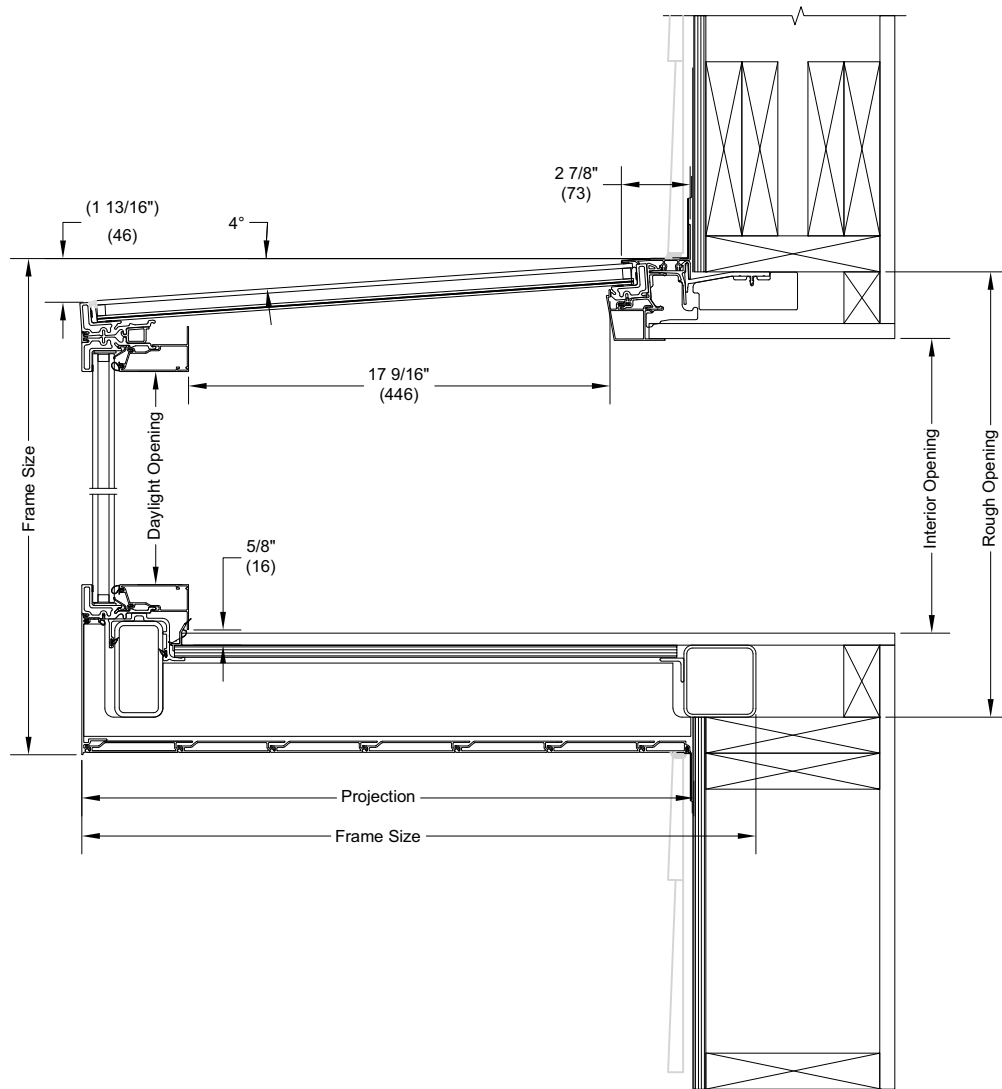
NOTE: Marvin does not provide cushions, supplied by others. The above chart is for reference.





**Section Details: Section View**

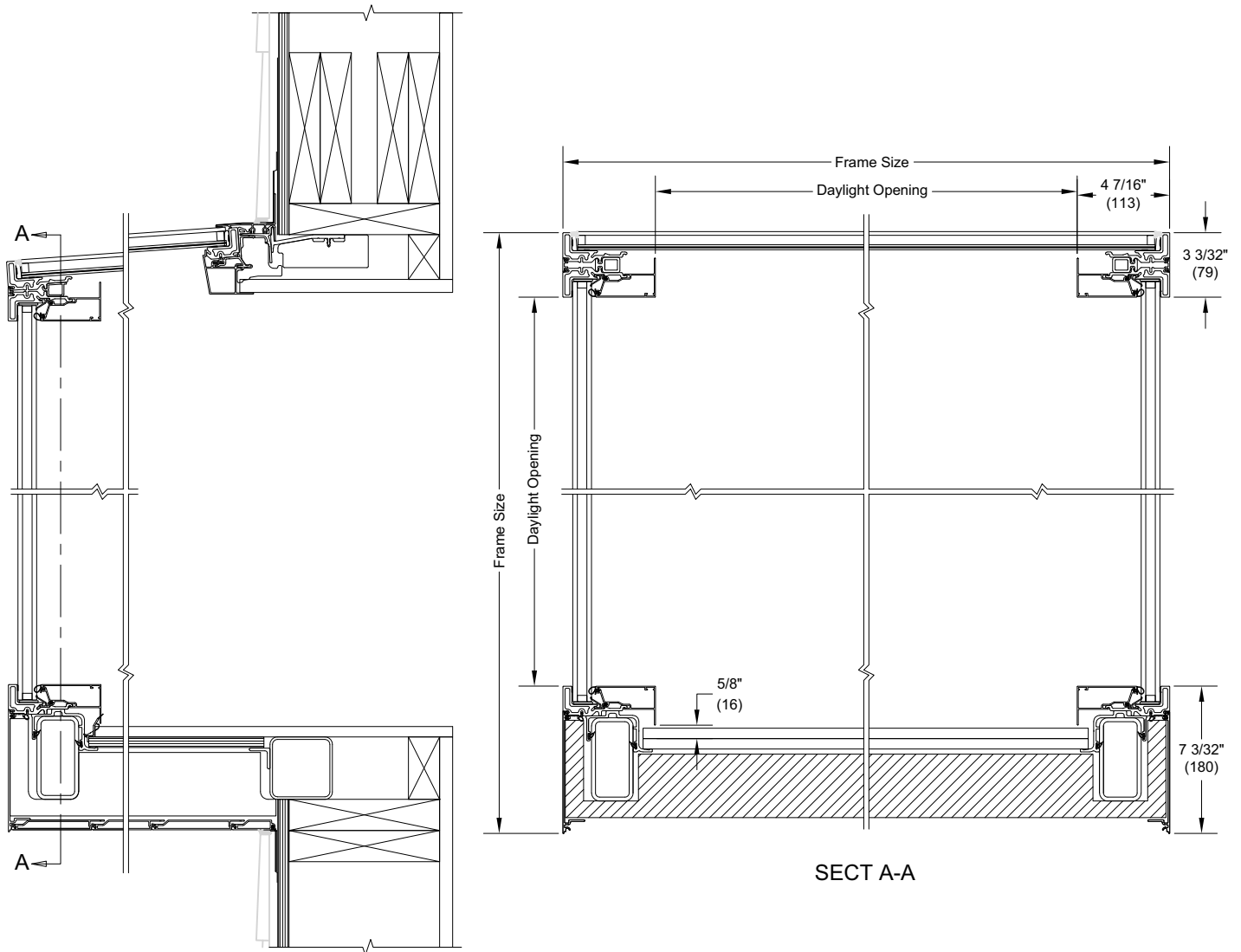
Scale: 3' = 1' 0"



*NOTE: Reference the Verification Document for specific Rough Opening reinforcement  
 Typical wood frame construction shown. Refer to verification document for structural requirements.  
 Measurement between bottom of cover to unit base.*

**Section Details: Front Elevation View**

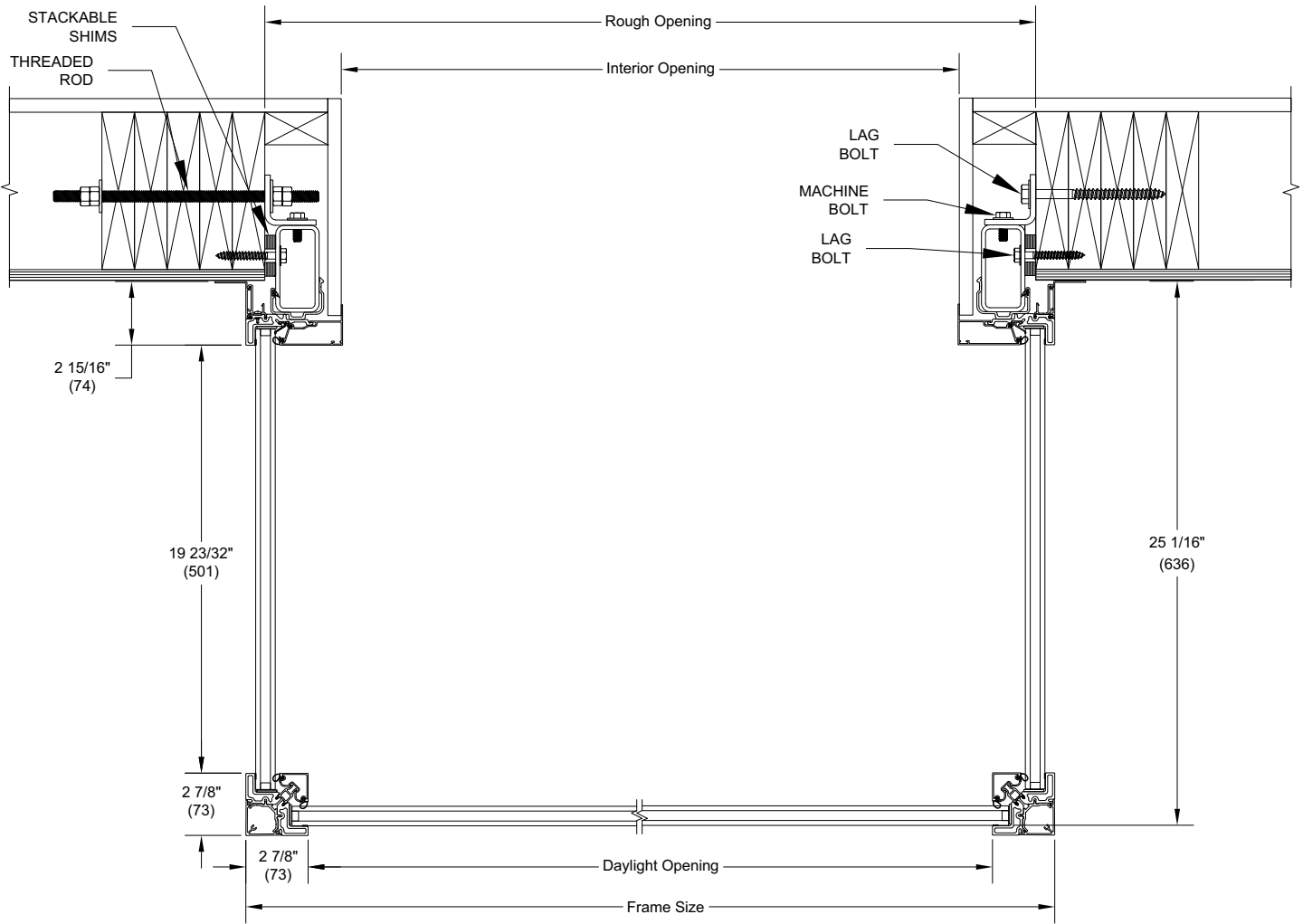
Scale: 3' = 1' 0"



*NOTE: Dimensions at glass. Due to projection and angle of side panels, the dimensions at the wall would be Frame Size + X. Typical wood frame construction shown. Refer to verification document for structural requirements.*

**Section Details: Plan View**

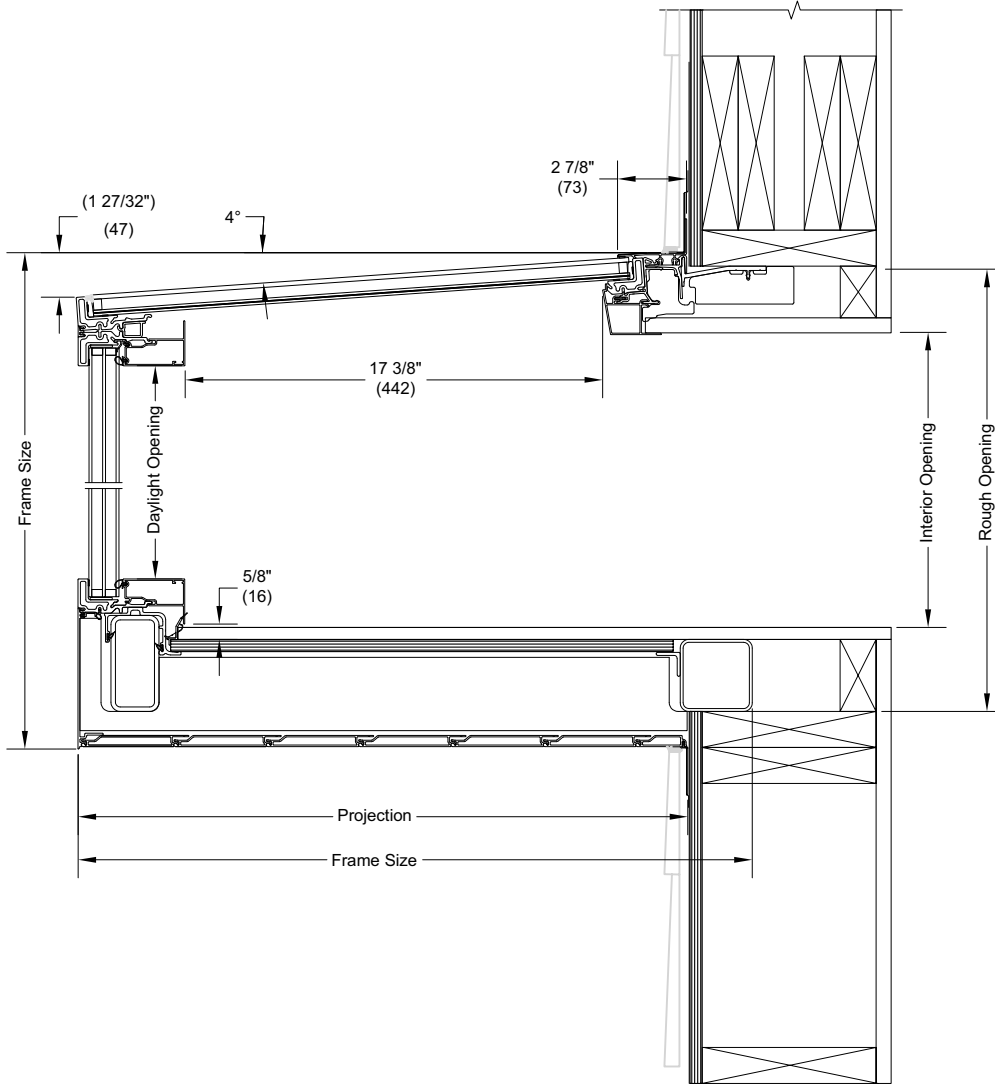
Scale: 3' = 1' 0"



*NOTE: Typical wood frame construction shown. Refer to verification document for structural requirements.*

**Section Details: Section View (Triple-Pane)**

Scale: 3' = 1' 0"

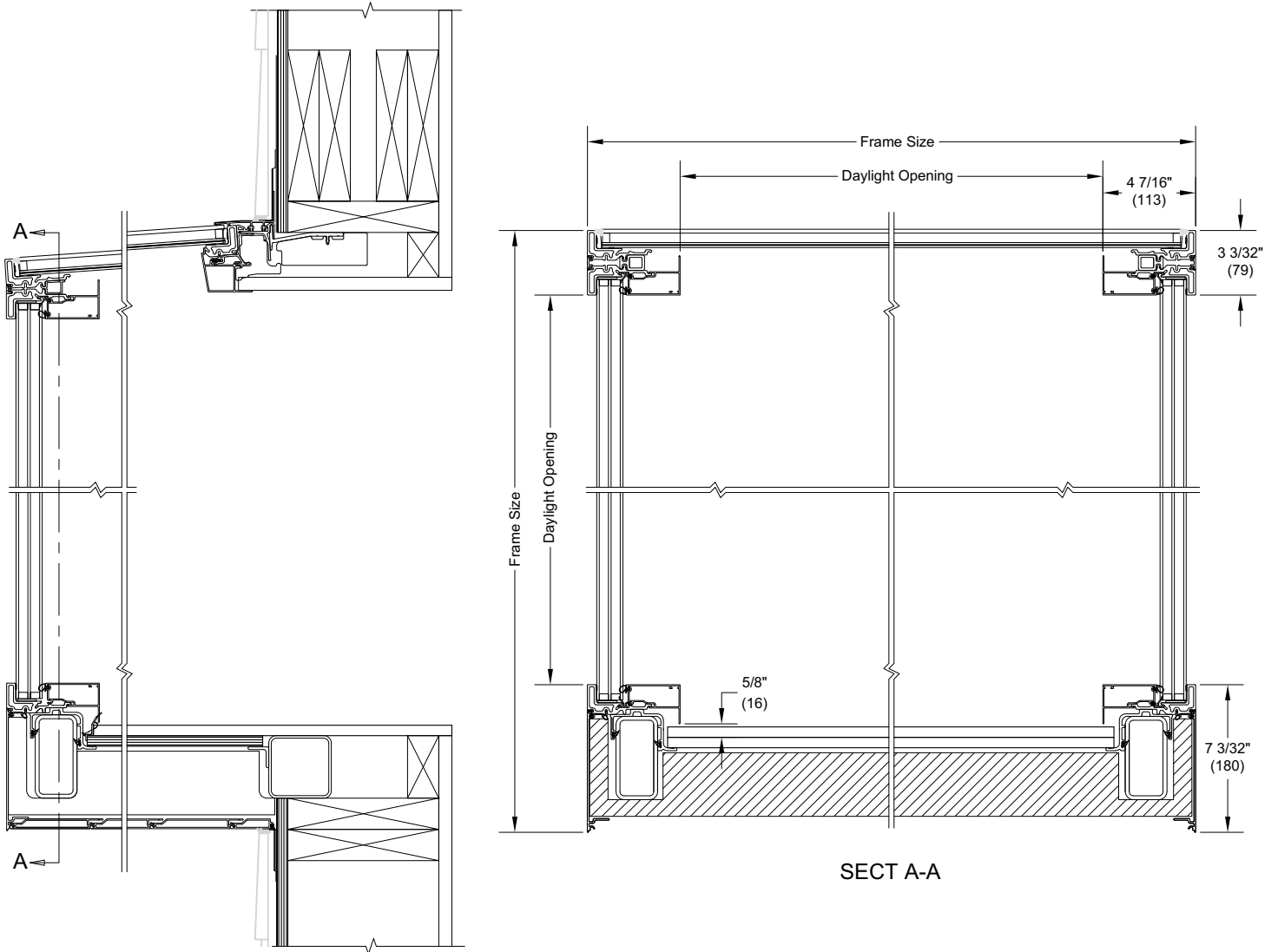


*NOTE: Tripane glass only available on CN7870 units.*

*Typical wood frame construction shown. Refer to verification document for structural requirements.*

**Section Details: Front Elevation View (Triple-Pane)**

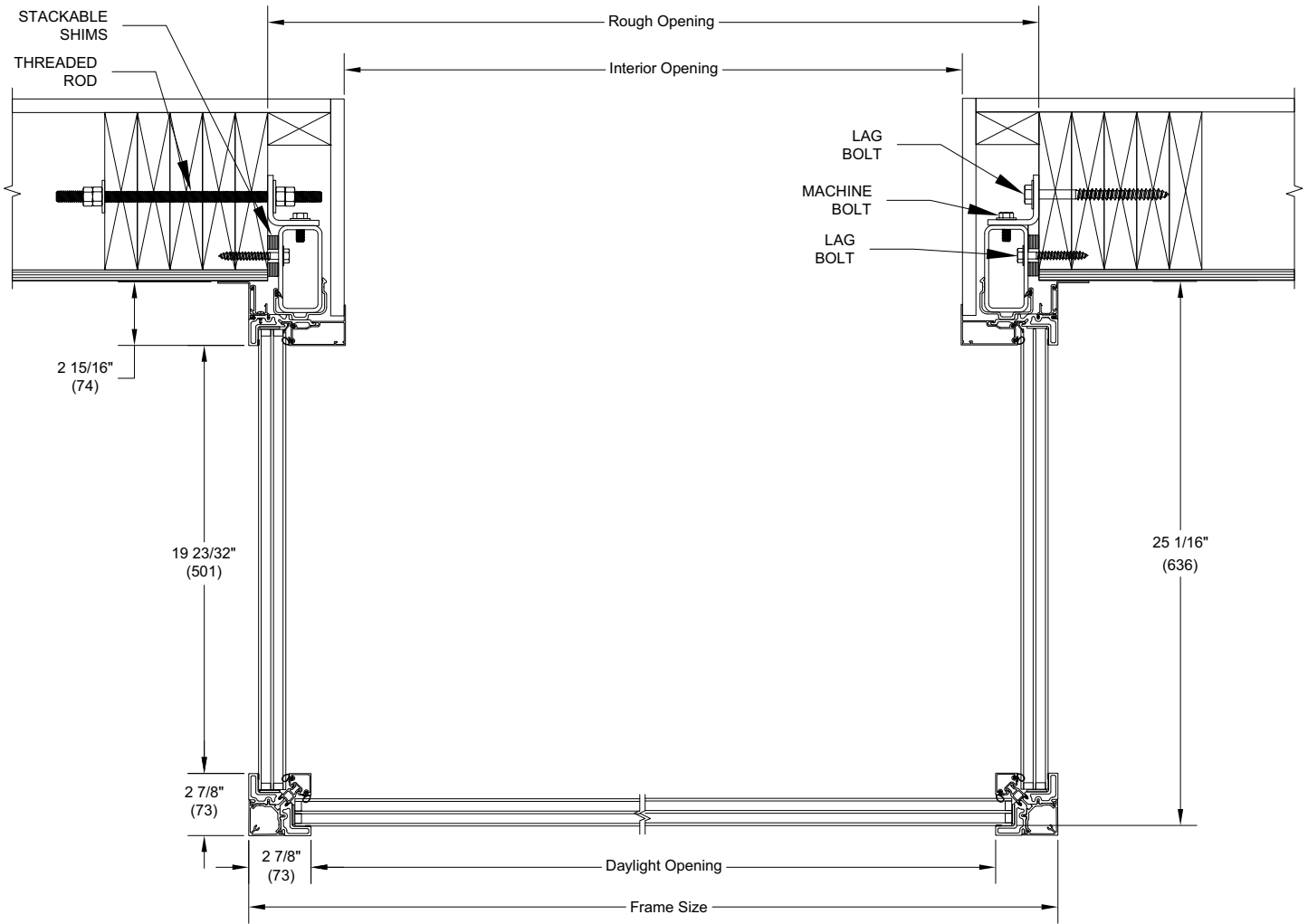
Scale: 3' = 1' 0"



*NOTE: Dimensions at glass. Due to projection and angle of side panels, the dimensions at the wall would be Frame Size + X  
 Tripane Glass only available on CN7870 units.  
 Typical wood frame construction shown. Refer to verification document for structural requirements.*

**Section Details: Plan View (Triple-Pane)**

Scale: 3' = 1' 0"



*NOTE: Tripane glass only available on CN7870 units.*

*Typical wood frame construction shown. Refer to verification document for structural requirements.*