

Awaken and Marvin Skylight

Unit Features: Marvin Skylights.....	1
Unit Features: Awaken Skylights.....	2
Minimum and Maximum Guidelines	3
Standard Size Chart: Skylight	4
Standard Size Chart: Skylight Awaken Venting and Stationary	5
Certified Sizes and Ratings	6
Measurement Conversions: Marvin Skylight.....	7
Measurement Conversions: Marvin Venting and Stationary Awaken Skylight.....	8
Section Details: Skylight.....	9
Section Details: Awaken Venting and Stationary Skylight.....	11
Section Details: Awaken Venting Skylight.....	12

Unit Features: Awaken Skylights

Marvin Awaken Venting Skylight: SKLTAWKV

Marvin Awaken Stationary Skylight: SKLTAWKSTAT

Frame and Sash:

- Fiberglass reinforced pultrusion exterior sash
 - Available exterior colors: Ebony, Gunmetal.
- Fiberglass reinforced pultrusion interior with fiberglass and polymer reinforced frame covers
 - Available interior color: White
- Indoor air quality sensor measures interior temperature, humidity, and air quality

Glass and Glazing:

- 7/8" insulating glass with gas fill and thermal edge spacer bar technology
- Tempered exterior pane and an annealed laminated interior pane
- Glazing seal: Black silicone beading, exterior
- Black Stainless Steel Spacer Bar
- Glass Coatings: Low E3
- Gas fill: Argon
 - Capillary tubes are required for high altitude. Argon gas is not available for units that require capillary tubes.

LED Lighting (optional):

- Optional integrated LED system contains tunable cool and warm white LEDs (2200 K - 5500 K)
- Controlled by wall switch or Marvin app

Interior Shade (optional):

- Optional roller shade is attached to the interior of the frame
 - Available in blackout or sheen, white in color

Weather Strip:

- All weather strip is black.
- Foam filled bulb weather strip on all four sides between the frame and the sash, barbing into the sash
- A closed-cell TPV foam-wrapped weather strip compresses between the frame and the glass.

Hardware (Awaken Venting Skylight only):

- Hinges
 - Stainless Steel, 4 bar parallel hinges are installed on each jamb (2x) and sill (1x)
 - Hinges open to 3 3/4", controlled by hard stop on each hinge
- Venting Motor
 - Two chain drive motors are installed in the jambs
 - The motors lock the sash closes or open when not in operation
 - Each motor operates at 24VDC
- Manual operation is not available

Screen (Awaken Venting Skylight only):

- A pleated screen makes a continuous hoop between the sash and the frame and is minimally visible from the interior or exterior when the unit is open
- The screen does not impede upon the daylight opening (DLO) of the unit
- The screen is barbed into the sash and frame using a PVC clasp and ribbed barb

Installation:

- The unit features a reversible mounting flange, allowing for a deck or curb mount installation.
 - an optional flashing kit is available for shingle, metal roof coverings.
- 14 degree minimal angle of installation.

Electric Ratings (specific to units with venting, LEDs or shades):

- Input voltage: 120VAC +/- 10%, 1A max
- Output voltage: 24 VDC, 4A max
- UL Certified

Unit Features: Awaken Skylights

Marvin Skylight: SKLT

Frame:

- Fiberglass and polymer reinforced extruded frame
 - Available exterior colors: Ebony, Gunmetal
 - Available interior color: White

Glass and Glazing:

- 7/8" insulating glass with gas fill and thermal edge spacer bar technology
- Tempered exterior pane and an annealed laminated interior pane
- Glazing seal: Black silicone beading, exterior
- Black Stainless-Steel Spacer Bar
- Glass coatings: Low E3
- Gas fill: Argon
- Capillary tubes are required for high altitude. Argon gas is not available for units that require capillary tubes

Installation:

- The unit features a reversible mounting flange, allowing for a deck or curb mount installation.
 - an optional flashing kit is available for shingle, metal rod coverings
- 14 degree minimal angle of installation.

Electric Ratings (specific to units with venting, LEDs or shades):

- Input voltage: 120VAC +/- 10%, 1A max
- Output voltage: 24 VDC, 4A max
- UL Certified

Minimum and Maximum Guidelines

- Dimensions below refer to Frame Overall (Basic Frame) Dimension (see figure on page 8).

Skylight

Minimum Width		Minimum Height		Maximum Width		Maximum Height	
in	mm	in	mm	in	mm	in	mm
18.66	(474)	38.66	(982)	50.66	(1287)	92.66	(2354)

Skylight Awaken Venting

Minimum Width		Minimum Height		Maximum Width		Maximum Height	
in	mm	in	mm	in	mm	in	mm
18.3	(465)	38.3	(973)	50.3	(1278)	92.3	(2344)

Skylight Awaken Stationary

Minimum Width		Minimum Height		Maximum Width		Maximum Height	
in	mm	in	mm	in	mm	in	mm
18.3	(465)	38.3	(973)	50.3	(1278)	92.3	(2344)

NOTE: Custom Sizes not available.

Refer to standard size charts on the following pages for specific size availability.

Standard Size Chart: Marvin Skylight

Skylight Call Number Widths	Frame Size Width		RO Width		Daylight Opening Width		Glass Size Width	
	ft-in	mm	ft-in	mm	ft-in	mm	ft-in	mm
16	1-6 21/32	(474)	1-2 1/2	(368)	1-0 13/16	(325)	1-4 57/64	(429)
24	2-2 21/32	(677)	1-10 1/2	(572)	1-8 13/16	(529)	2-0 57/64	(632)
32	2-10 21/32	(880)	2-6 1/2	(775)	2-4 13/16	(732)	2-8 57/64	(835)
48	4-2 21/32	(1287)	3-10 1/2	(1181)	3-8 13/16	(1138)	4-0 57/64	(1242)

Skylight Call Number Heights	Frame Size Height		RO Height		Daylight Opening Height		Glass Size Height	
	ft-in	mm	ft-in	mm	ft-in	mm	ft-in	mm
36	3-2 21/32	(982)	2-10 1/2	(876)	2-8 13/16	(833)	3-0 57/64	(937)
48	4-2 21/32	(1287)	3-10 1/2	(1181)	3-8 13/16	(1138)	4-0 57/64	(1242)
60	5-2 21/32	(1592)	4-10 1/2	(1486)	4-8 13/16	(1443)	5-0 57/64	(1547)
90	7-8 21/32	(2354)	7-4 1/2	(2248)	7-2 13/16	(2205)	7-6 57/64	(2309)

Refer to standard size charts for specific size availability.

Available Sizes

Available configurations				
CN	36	48	60	90
16	x	x	x	x
24	x	x	x	x
32	x	x	x	x
48	x	x	x	x

Standard Size Chart: Awaken Venting and Stationary Skylight

Skylight Awaken

Awaken Call Number Widths	Frame Size Width		RO Width		Daylight Opening Width		Glass Size Width	
	ft-in	mm	ft-in	mm	ft-in	mm	ft-in	mm
16	1-6 19/64	(465)	1-2 1/2	(368)	1-0 39/64	(320)	1-4 57/64	(429)
24	2-2 19/64	(668)	1-10 1/2	(572)	1-8 39/64	(524)	2-0 57/64	(632)
32	2-10 19/64	(871)	2-6 1/2	(775)	2-4 39/64	(727)	2-8 57/64	(835)
48	4-2 19/64	(1278)	3-10 1/2	(1181)	3-8 39/64	(1133)	4-0 57/64	(1242)

Awaken Call Number Heights	Frame Size Height		RO Height		Daylight Opening Height		Glass Size Height	
	ft-in	mm	ft-in	mm	ft-in	mm	ft-in	mm
36	3-2 19/64	(973)	2-10 1/2	(876)	2-8 39/64	(828)	3-0 57/64	(937)
48	4-2 19/64	(1278)	3-10 1/2	(1181)	3-8 39/64	(1133)	4-0 57/64	(1242)
60	5-2 19/64	(1582)	4-10 1/2	(1486)	4-8 39/64	(1438)	5-0 57/64	(1547)
90	7-8 19/64	(2344)	7-4 1/2	(2248)	7-2 39/64	(2200)	7-6 57/64	(2309)

Maximum glass size is 16 square feet for Venting units. Refer to standard size charts below for specific size availability.

Available Sizes

Available configurations				
CN	36	48	60	90
16	x	x	x	x
24	x	x	x	x
32	x	x	x	
48	x	x		

NOTE: Sizes in gray only available as Stationary.

Certified Sizes and Ratings

Product	Air Tested to psf	Water Tested to psf	Design Pressure (DP)	Structural Overlad Tested to (psf)	Certification Rating	Max CN Width	Max CN Height
Marvin Skylight	1.57	7.5	50	+100 / -75	PG50	48	90
Marvin Awaken Venting Skylight	1.57	6	40	+80 / -60	PG40	24	90
Marvin Awaken Venting Skylight	1.57	6	40	+80 / -60	PG40	32	60
Marvin Awaken Venting Skylight	1.57	4.6	30	+60 / -45	PG30	48	48
Marvin Awaken Stationary Skylight	1.57	7.5	50	+100 / -75	PG50	48	90

NOTE: For CE ratings, please visit CE Technical Manual.

Measurement Conversions: Marvin Skylight

Marvin Skylight					
From	To	Total Width		Total Height	
Rough Opening		in	mm	in	mm
Call Number	Rough Opening	-1.5	-(38)	-1.5	-(38)
OM of Frame	Rough Opening	-4.156	-(106)	-4.156	-(106)
Glass Size	Rough Opening	-2.25	-(57)	-2.25	-(57)
Daylight Opening	Rough Opening	1.69	(43)	1.69	(43)

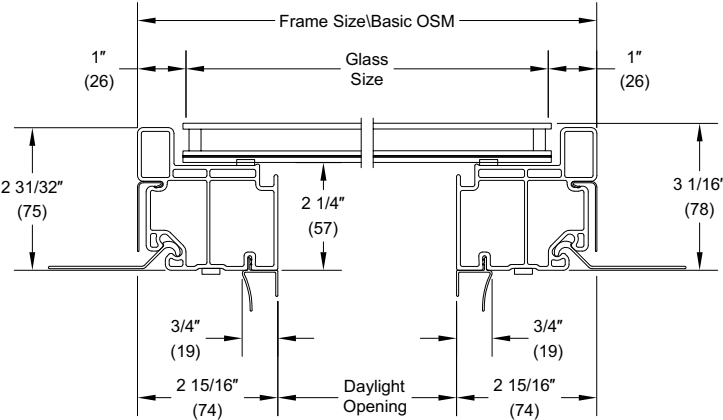
Measurement Conversions: Marvin Venting and Stationary Awaken Skylight

Awaken Skylights					
From	To	Total Width		Total Height	
Rough Opening		in	mm	in	mm
Call Number	Rough Opening	-1.5	-(38)	-1.5	-(38)
OM of Frame	Rough Opening	-3.796	-(96)	-3.796	-(96)
OM of Sash	Rough Opening	-4.281	-(109)	-4.281	-(109)
Glass Size	Rough Opening	-2.25	-(57)	-2.25	-(57)
Daylight Opening	Rough Opening	1.89	(48)	1.89	(48)

Section Details: Marvin Skylight

Scale: 3' = 1' 0"

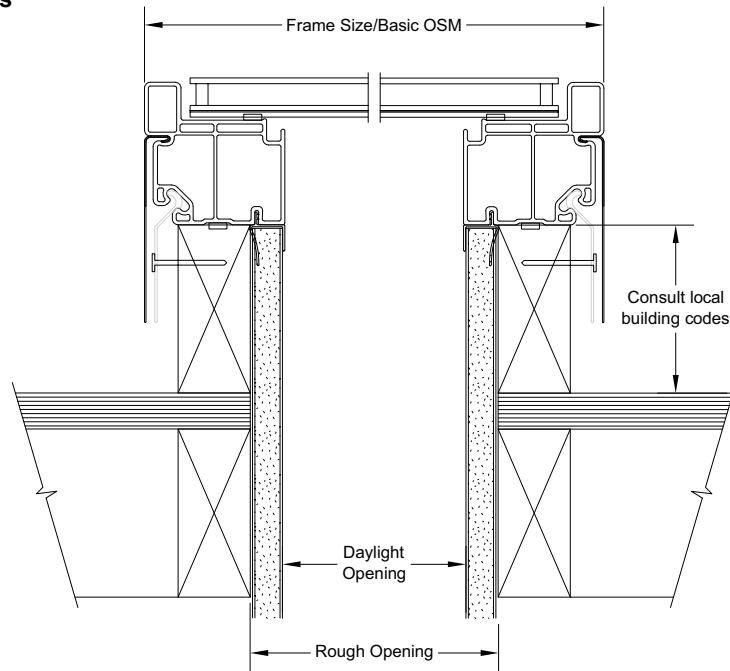
Insulating Glass



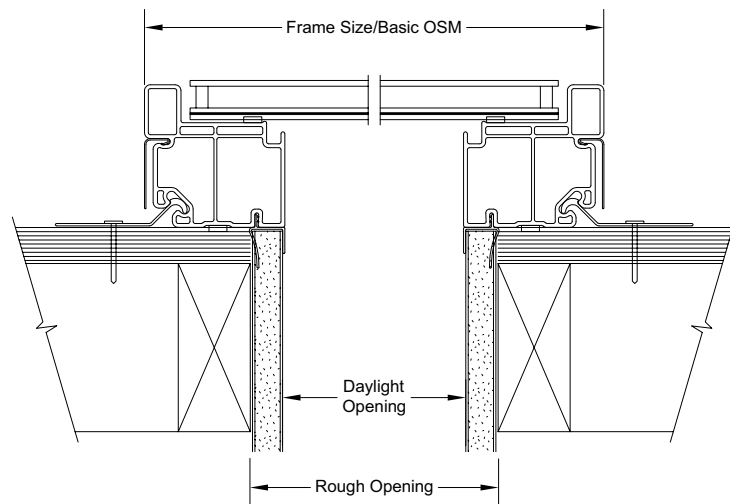
Section Details: Marvin Skylight

Scale: 3' = 1' 0"

Insulating Glass



Curb Mount Installation



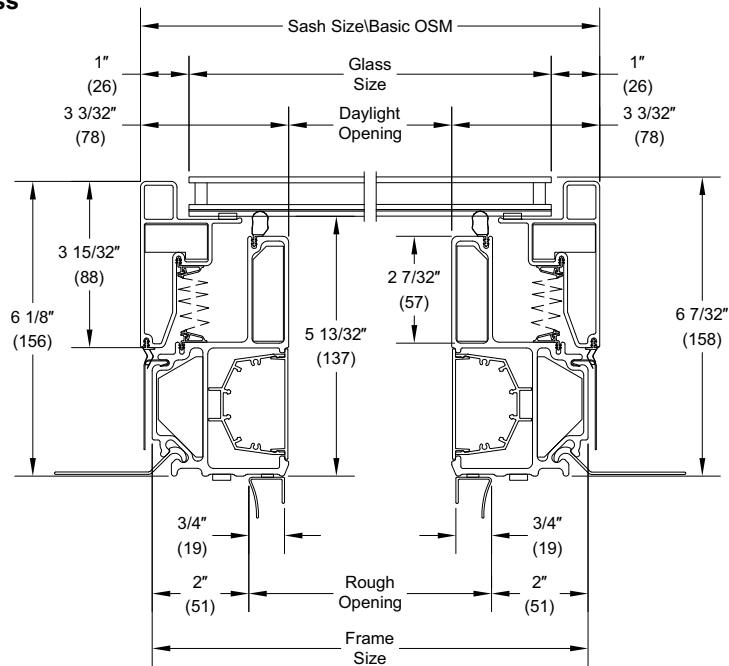
Deck Mount Installation

*NOTE: Work with your local building code to verify methods based on pitch/etc. (Code)
 14 degree minimum angle of installation.
 Optional flashing system not shown*

Section Details: Awaken Venting and Stationary Skylight

Scale: 3' = 1' 0"

Insulating Glass



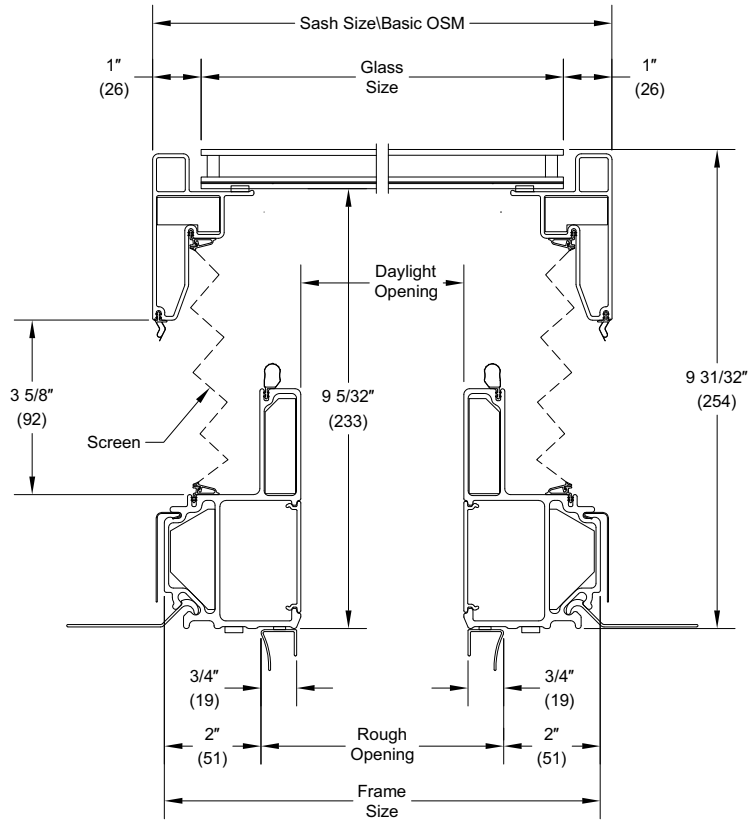
NOTE: Sash is larger than the frame with the Skylight

NOTE: Venting unit shown. Screen not applicable to stationary unit.

Section Details: Awaken Venting Skylight

Scale: 3' = 1' 0"

Insulating Glass

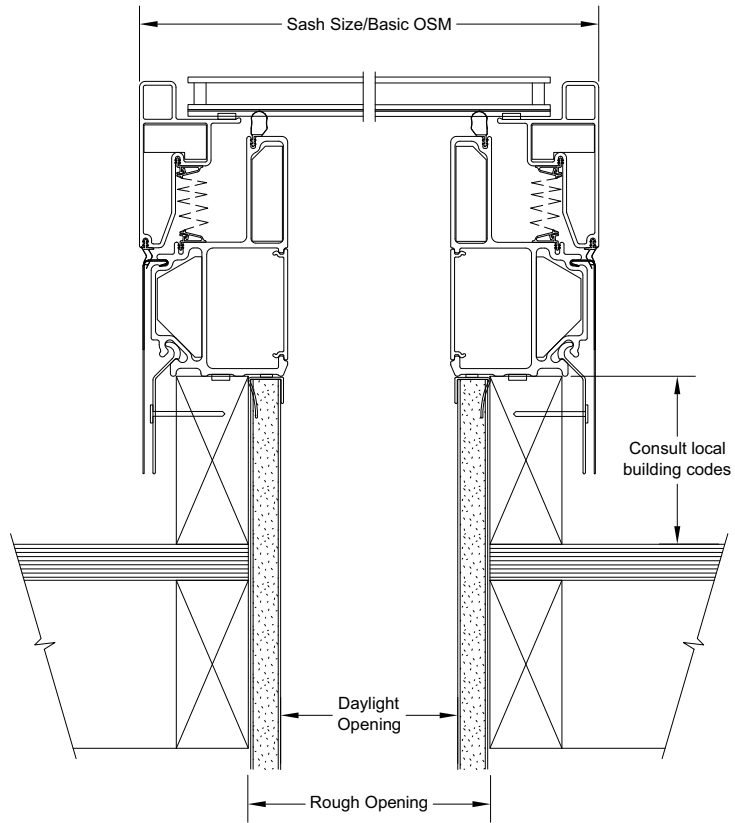


NOTE: Sash is larger than the frame with the Skylight

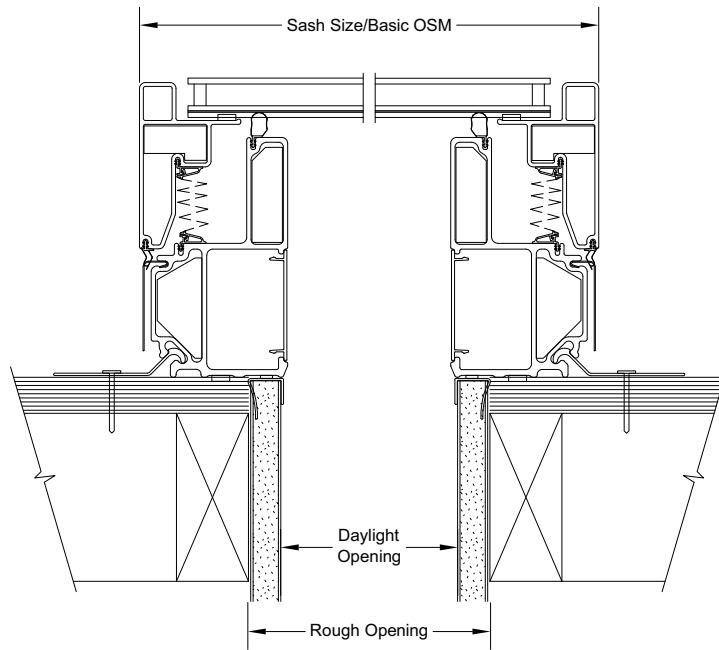
Section Details: Awaken Venting and Stationary Skylight

Scale: 3' = 1' 0"

Insulating Glass



Curb Mount Installation



Deck Mount Installation

*NOTE: Venting unit shown. Screen not applicable to stationary unit.
Optional flashing system not shown.
14 degree minimal angle of installation.*